

CARITAS KITUI

2016 ANNUAL REPORT



ANNUAL REPORT 2016

Our Vision

A transformed community enjoying enhanced human dignity through integral human development inspired by the Love of God.

Mission Statement

Inspired by the love of God to promote integral human development through collaborative and impartial intervention to achieve a self-sustainable community of persons.

Note from the Director

It is with profound gratitude that I welcome you to read through the Caritas 2016 Annual Report. This report provides in a snapshot the work done by Caritas Kitui through the implementation of a number of projects and Programmes across the County. As an introduction, Caritas is Latin and means Love for all. Caritas hence delivers service to all with the Love of Christ hence we do not discriminate on whatever aspect of life be it gender, religion, age etc. In this milieu, it is worth to not that service is delivered to the community by our staff in a love that transcends self in order to bring about integral human development for all.

Caritas Kitui is the Development Department of Diocese of Kitui that is mandated to carry out charitable and social activities on behalf of the Diocese. In order to reach out to the community in a significant and transformative way, Caritas operates in a number of thematic areas including Water, Justice and Peace, Livelihood, Climate Change and Environmental protection, Animal/Donkey Welfare and Women Empowerment.

In order to realize our goal, we work in close collaboration with both the County and National Governments, different funding agencies and partners who include CAFOD, Misereor, Trocaire, UNDP, Brooke East Africa, WFP, Fastenopfer, Diakonia Sweden, St Paul's & Minneapolis, and Catholic Relief Services.

I would like to appreciate in a very special way the Caritas Board members who have continued to provide their unwavering support at the policy and strategic level as well as playing an advisory role to ensure the Diocese of Kitui remains a model in offering service to the people of Kitui,

I thank the Bishop of Kitui and the Vicar Generals for their continued support in ensuring that we remain vigilant in our work and that we are able to utilize every opportune moment to change lives especially of the neediest and deserving.

I thank the County Commissioner who has provided his support in ensuring we feel safe in all the areas we operate and for taking keen interest in our work.

I express my gratitude to the Caritas Kitui Staff for their diligence, hard work, commitment, and faith in working towards the realization of an integral human development for all.

Joseph Kamau
Caritas Director
Catholic Diocese of Kitui.

CARITAS KITUI 2016 MILESTONES IN NUMBERS

Served **118,458**
People through
Humanitarian
response (Cash for
Assets)

15
PROJECTS

Provided safe
drinking water,
water management
training and
Sanitation **to**
10,000 schools

Rehabilitated 18
Water structures
benefiting **2,593**
people and
12,000
Livestock

Constructed
2,670
Rocket
Stoves in
2,670 HHs

Built the capacity
good governance,
devolution in
extractives to **511**
direct
Participants

Increased
Agricultural
productivity to
78,000 HHs

Works in **8**
Sub
counties
and in **40**
wards

Improved Donkey
welfare for **1,590**
Donkey and
807 donkey
users and owners

This year Caritas Kitui indirectly benefited 299,734 people through radio programmes, policy influence and the replication of successful Caritas program by non-Direct Projects Beneficiaries

Chapter one

Introduction and Background of Caritas Kitui

Brief history of Caritas and Relationship with Catholic Diocese of Kitui

Caritas Kitui is the Social and Development department of the Catholic Diocese of Kitui, established in 1974 as development department and branded as Caritas Kitui in 2010.

It aims at promoting sustainable human dignity, improved livelihoods and a just society with participation of community.

Caritas Kitui operates within Kitui County. Kitui is geographically in the lower Eastern region of Kenya and is approx. 30,496 km² in size with 1,012,709 people (2009 census). It has 8 sub Counties and 40 administrative wards. The County is classified as arid and semi-arid lands with agro-pastoral as the dominant economic activity.

Projects Implementation Context

In the reporting period, Caritas Kitui work was guided by 2016-2020 strategic plan and implemented various interventions across the County of Kitui. The table below shows the specific geographical coverage areas with various interventions in the reporting year:

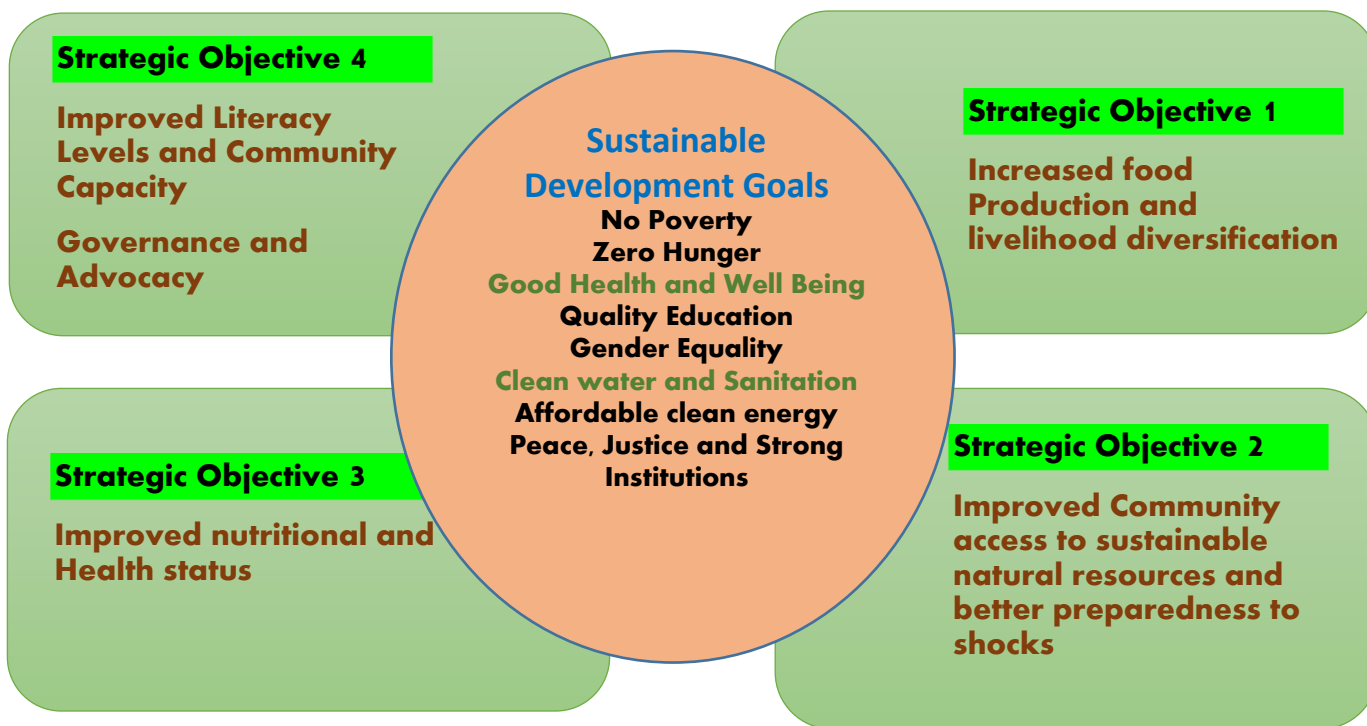
| No. | Caritas Kitui Intervention | Sub-County | Wards/Target Areas |
|-----|---|---|---|
| 1. | Amaranth Project: Improve food and nutrition security among the orphans and vulnerable children, People with disabilities and persons living with HIV | Kitui Central, Kitui West, Kitui Rural, Kitui East, Kitui South, Mwingi North, Mwingi West and Mwingi Central | All wards |
| 2. | Carbon Offset Projects: Increased reduction in CO ₂ -emissions responsible for climate change by using the new cook stoves by rural communities of central and southern Kenya | Kitui West Kitui Central Kitui Rural | All Wards in these Sub-counties |
| 3. | Amkeni Wakenya Project: Promoting Transformative Governance through Deepening Human Rights, Participation and Access to Justice under Devolved Governance | Kitui Rural | Yatta Kwa Vonza, Kisasi and Mbitini |
| | | Kitui South | Ikanga/Kyatune, Mutomo/Kibwea and Ikutha/Kasaala |
| | | Kitui East | Zombe/Mwitika and Mutitu Kaliku |
| 4. | Haki Madini: Madini Yetu Wajibu Wetu Project | Kitui East Mwingi Central Mwingi North Kitui South | Kitui East (Block A and B), Kitui South (Kanziko and Simisi), Mwingi Central (Block C and D) Mwingi North (Ngaie) |

| | | | |
|-----|---|---|---|
| 5. | Kitui Integrated Food Security Project: To improve food security and resilience to climatic shocks for target communities in Yatta/Kwa Vonza and Nguutani wards in Kitui County | Kitui Rural and Mwingi West | Yatta/KwaVonza and Nguutani wards |
| 6. | Integrated Wash-Agric Project: Households have improved livelihoods security | Kitui West | Kithumula/KwaMutonga Ward |
| 7. | Climate Resilient Agriculture Project: To transform the livelihoods of 33,609 poor women, men and children in marginalised rural areas of Kitui County | Kitui East Kitui West, Kitui Rural, Mwingi West and Mwingi Central | All wards in Kitui East except Endau/Malalani ward, All wards except Nguni and Mui wards |
| 8. | Mtunze Punda Daima project: | Mwingi central, Mwingi west and Mwingi north | All wards in these sub counties |
| 9. | Kenya Semi-Arid & Livestock Enhancement Support Project: To improve the competitiveness of the cattle, sheep and goat's meat value chains by increasing productivity and boost marketing and trade of live animals and meat (cattle and goat), hides and skins and other associated livestock by-products | Mwingi Central Kitui East and Mwingi North Sub counties | |
| 10. | Protracted relief and recovery operations (PRRO): To enhance the ability of the targeted households to withstand food security shocks related to recurrent droughts | Kitui Rural Kitui East Kitui South | All wards in these sub counties |
| 11. | Justice and Peace Lenten Program | Whole Diocese/County | 26 Parishes |
| 12. | Women Program: Promotion of human integral development through diverse empowerment programs | Whole Diocese | 26 Parishes |
| 13. | Integrated Risk Reduction Project (IRRP): To contribute to sustainable food security and livelihoods for the population in the Diocese of Kitui | Mwingi West | Kyome/Thaana Ward |
| 14. | Kenya Livelihood support Project (KLSP): To improve resilience of drought affected communities in Kitui | Kitui Rural | Kyangi ward |

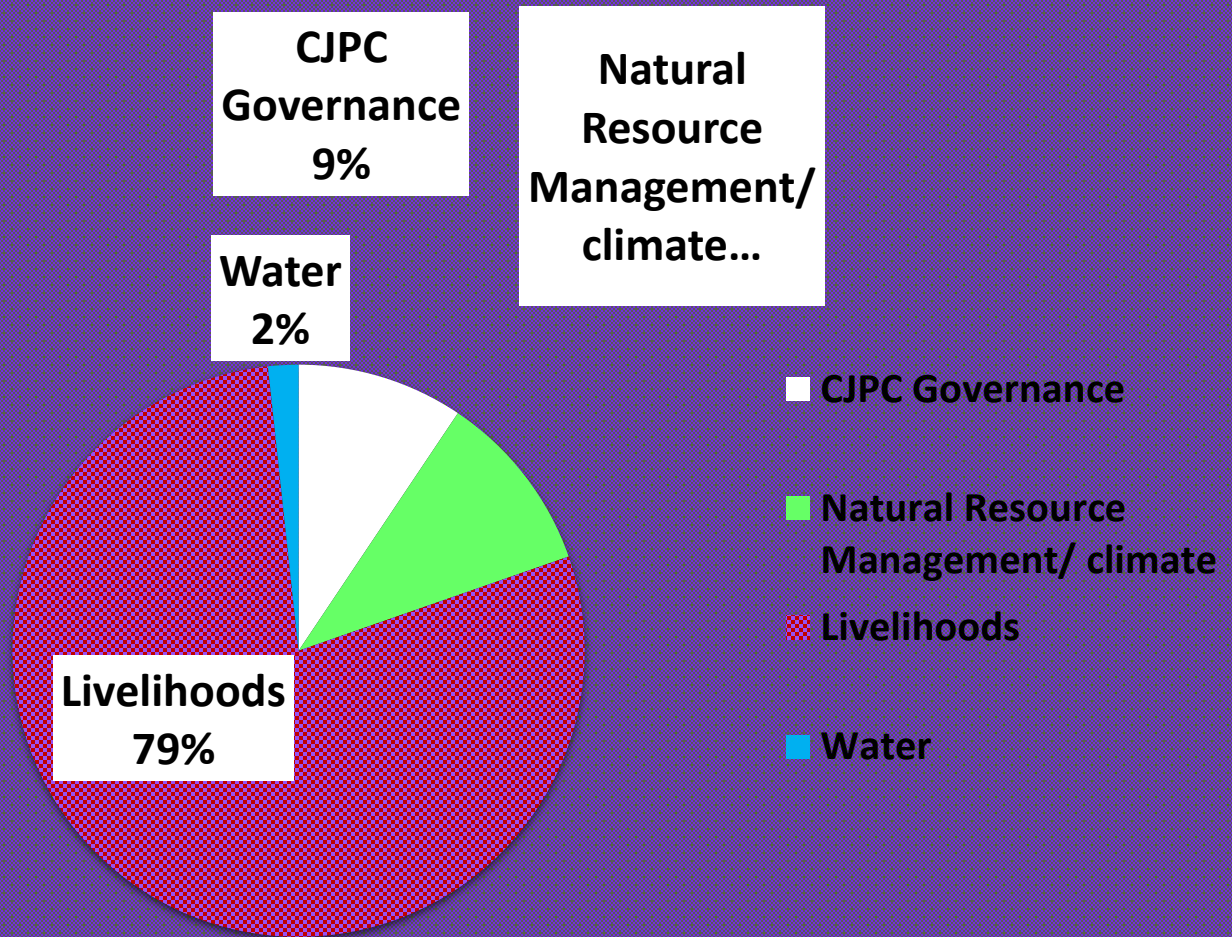
| | | | |
|-----|------------------------------------|--|---|
| 15. | Asal Resilience Project(ARP) | Kitui East, Mwingi Central and Mwingi North | Endau/Malalani, Nguni and Ngomeni Wards |
| 16. | Quick impact Project (Partnership) | Kyuso, Kimangao, Kamuwongo, Nguni, Nuu and Mwingi Parishes | 31 schools |

Caritas Focus in broad themes briefly linked to the SGDs

Caritas Kitui strategic objectives provides the basis of Caritas work, which is aligned with the Sustainable Development Goals (SDGs) for greater global contribution to prosperity for all as clearly envisioned by SGDs. See the illustration below.



Broad Thematic Focus areas for Caritas Projects/ Programs



Chapter two:

Achievements and Successes

Caritas Kitui has had great achievement in 2016 depending on the project targets. The detailed achievements are detailed in the table below.

1. Livelihoods

| Project Name | Project Overall Objective | Target Area | Target Beneficiaries | Achievement/Outcome |
|---|---|--|--|---|
| Kitui Integrated Food Security Project (KIFSP) Funded by CAFOD | To improve food security and resilience to climatic shocks for target communities in Yatta/Kwa Vonza and Nguutani wards in Kitui County | Yatta/Kwa Vonza in Kitui Rural Sub County and Nguutani wards In Mwingi West Sub County | 1,150 HH (598 women and 552 men) and 6,900 people | <ul style="list-style-type: none"> • Increased food production for 1150 HHs after adoption new farming technology and use of Drought Tolerant Crops (DTCs). • Land conserved through planting of 5000 trees at HHs level and in degraded lands. • Increase HH incomes with an average income of Ksh. 40,000/HH from sales of improved livestock breeds (big body size and early maturing goats and chicken) with an average of 100 birds sold per HH. • 3 Km reduced walking distance to water source for 300 HHs and 100 Livestock who have benefited with safe water. • Sustainable charcoal production and sand harvesting after community were sensitized on natural resource management policies. • Increased income and nutrition security for 40 irrigation farmers along Athi river |

| | | | | |
|--|--|---|--|--|
| <p>Kenya Livelihood support Project (KLSP) Funded by Caritas Korea</p> | <p>To improve resilience of drought affected communities in Kitui</p> | <p>Kyangi ward in Kitui Rural Sub County</p> | <p>582HH (407 women and 175men) and 3,492 people</p> | <ul style="list-style-type: none"> • Increased HH income from sales of improved breed (Ken brow) which had big body structure and early maturity. • Improved animal health, marketing and integrated livestock production with crops for maximum HH Benefit. • Climate change mitigation measures like tree planting, planting drought resistant crops, use of low/renewable energy and rain water harvesting. • 40 Community Managed Disaster Risk Reduction (CMDRR) Members received early warning and climate information and disseminated to communities for preparedness. |
| <p>Climate Resilience Agriculture (CRA) Funded by CAFOD</p> | <p>To transform the livelihoods of 33,609 poor women, men and children in marginalised rural areas of Kitui County</p> | <p>All wards in Kitui East except Endau/Malalani ward, Kitui West, Kitui Rural, Mwingi West and Mwingi Central except Nguni and Mui wards</p> | <p>2,967 HHs (2,501 women and 466 men) with 17,000 people</p> | <ul style="list-style-type: none"> • 98% Farmer Field School (FFS) Members adopted intercropping and use of Drought Tolerant Crops (DTCs). • Improved capacities of Smallholder farmers to manage risks by through their farming techniques • Increased group Savings with an average of Ksh130, 000 and KES. 90,000 extended to members as loans in the 10 savings and internal lending (SILC) groups. • Improved average income of Kshs. 384,760 by tree nursery groups with average of KES. 22633 per group from sales of tree seedlings • Increased chicken population by 60% among the 30 poultry groups. • Increased income Ksh. 5,400 per household from sales of chicken with an average of 13 birds sold and Ksh. 1450 from sale of eggs per month. |

| | | | | |
|--|--|--|---|---|
| <p>Integrated Risk Reduction project for rural communities (IRRP) funded by MISEREOR</p> | <p>To contribute to sustainable food security and livelihoods for the population in the Diocese of Kitui</p> | <p>Kyome/Thaana Ward in Mwingi West Sub</p> | <p>3,000 HHs (1560 women and 1440 men) with over 10,000 people</p> | <ul style="list-style-type: none"> - 95% farmers adopted Good Agricultural Practices (GAP) with an average of 10% in crop production and especially green grams. - At least every HH had planted 20 and more trees in their household after sensitization on climate change - 38% Increased HH income of average KES.5,874 from sales of livestock and livestock products due to increased livestock asset in the target farmers and crop sales. - 2 farmer groups signed contracts with EABL to produce sorghum. - Operational Health and Safety committee initiated after staff training leading to improved ability of staff and community to detect and swiftly respond to health emergencies through the H&S committees - 98 groups formed and trained on saving and Internal Lending in Communities (SILC). Promoting culture of savings and loaning - 15% reduction in post-harvest loses. - Improved income from sales of green grams to farmers who sold their harvest through collective groups due to increased bargaining power as group members. |
| <p>Mtunze Punda Daima - funded by Brooke EA</p> | <p>By 2021, sustainable change in welfare of 94,800 working donkeys in Kitui</p> | <p>All wards in Mwingi North, Mwingi Central and Mwingi West</p> | <p>9,936 Donkey in 30 groups of 860 members (754 women and 106 men)</p> | <ul style="list-style-type: none"> - Improving behavior and attitude towards the donkey and for some 9,936 donkeys by 860 donkey owners organized in 30 groups. - Community advancing promotion of donkey welfare through own initiative such as group market clean up exercise for public awareness on need to protect donkeys feeding on garbage and other waste that have negative health implications to donkeys like colic, this was witnessed in Kamuwongo groups. - Improved quality of service provision through capacity building of 42 service providers. 24 service providers have been assessed using the work based tool Clinical Quality Monitoring (CQM) and 85 |

| | | | | |
|--|--|---|--|--|
| | | | | <p>donkeys reached through direct Brooke funded emergencies cases attended by Caritas veterinary doctors.</p> <ul style="list-style-type: none"> - Increased linkages between Local Service Providers (LSPs) and the donkey owners/users during trainings thus providing platform for donkey owner to seek for veterinary services. - Increased Cross learning and referring among LSPs after consistent engagement of service providers and enlightenment on the need to consult with each other on field challenging cases or even refer cases |
| Asal Resilience Project (ARP) funded by Trocaire | To improve sustainable livelihood security of targeted vulnerable HHs through increased income, food and diversified livelihoods strategies. | Endau/Malalani ward in Kitui East, Nguni Ward in Mwingi Central and Ngomeni ward in Mwingi North Sub counties | 1815 HH (604 women and 1,210 men) 10,884 People | <ul style="list-style-type: none"> - Reduced post-harvest loses by 30% because of timely of harvesting, appropriate drying and preservation grains by 60% of target farmers. - Increased crop production after adoption of Good Agricultural Practices (GAP). - Income of Kes. 82,700 realized by 62 trained farmers after making the sales of 500kgs at Ksh 185 per kg. - 35% increase in HHs incomes from poultry and goat sales , boda boda operation ,sales of honey and bee products, crops and vegetables - 10 Natural Resource Management Committees (NRMC) in place and utilizing Natural Resources sustainably - 95% of target HHs have and are utilizing latrines at HH level with on areas declared Oral Defecation Free (ODF) zone. - 10,500 Trees planted at HH level degraded land. |

| | | | | |
|--|--|---|--------------------------------------|--|
| <p>Protracted Relief and Recovery Operations (PRRO) funded by WFP</p> | <p>To enhance the ability of the targeted households to withstand food security shocks related to recurrent droughts</p> | <p>Kitui Rural (Kwa Vonza/Yatta and Kanyangi wards Kitui East (Zombe/Mwitika Mutitu/Kaliku Voo/Kyamatu Endau/Malalani wards Kitui South (Ikanga/Kyatune Mutomo Mutha Ikutha Kanziko Athi)</p> | <p>13 ,416 HHs and 79,398 People</p> | <p>Improved food, nutrition security and income diversification</p> <ul style="list-style-type: none"> - 636 ha of land conserved with Zai pits against a yearly target of 196 ha - 3,920 ha of land conserved with terraces: year target 1,658 ha - 234 ha of land irrigated against yearly of 326 ha using sunken beds, deep furrows, tied ridges - 56 ha of land irrigated with water from farm ponds against yearly target of 326 ha <p>Improved livestock production and income from the livestock and its products</p> <ul style="list-style-type: none"> - 9,027 Mt against 3,787 Mt yearly target of hay and fodder was produced, and fed to livestock among the target farmers - Improved milk production <p>Improved access to water for livestock and human consumption</p> <ul style="list-style-type: none"> - 67 dams/pans have helped reduce distances to water points in good rains from 7km to 3kms - Improved animal health leading to improved production <p>Increasing environmental conservation and management</p> <ul style="list-style-type: none"> - 274,395 trees planted against a yearly target of 273,480 trees. - 7 commercial nurseries still managed and are the source for tree seedlings |
|--|--|---|--------------------------------------|--|

2. Water

| Project Name | Project Overall Objective | Target Area | Target Beneficiaries | Achievement |
|--|---|---|---|--|
| Kenya Semi-Arid Lands Enhancement Support Project (K-SALES) funded by Land O LAKES | To improve the competitiveness of the cattle, sheep and goat's meat value chains by increasing productivity and boost marketing and trade of live animals and meat (cattle and goat), hides and skins and other associated livestock by-products. | Mwingi Central, East and Mwingi North Sub counties | 2,593 HHs (1653 women, 940 men) and 18,922 people | <ul style="list-style-type: none"> Rehabilitated 18 existing communal water points. Other construction works accompanied the rehabilitation of the water structures included construction of 18 cattle troughs. Improved/shortened time for access or increased access to water for (a number of people) and domestic animals after rehabilitation of 18 existing water point and construction of 18 cattle troughs Improved water management and utilization after 803 WUA members trained on governance, financial management, group appropriate water pump operations and maintenance skills. |
| Integrated Water and Agricultural Project (IWAP) funded by CRS. | Households have improved livelihoods security | Kithumula/Kwa Mutonga Ward in Kitui west Sub-county | 1,670 HHs (679 women, 971 men) and 10,020 people | <ul style="list-style-type: none"> Shortened distances to water points for 1130 HH by drilling 2 boreholes at Ndiuni and Mithikwani villages. 760 Pupils and teachers benefiting with water from a 50m3 reservoir steel tank erected at Mithikwani primary school. 4 sand dams constructed in Yumbilile, Kwa Muasya, Lower Miwongoni and Kwa Musyiva. 5 roof water harvesting systems installed in five schools (A.C.K Ngomango, Ndiuni, Syomwitu, Kwa Kitui primary schools and Mithikwani secondary) 1130HH have increased by uptake of latrine use and adoption of proper hygiene practices. Increased uptake of latrine use and adoption of proper hygiene practices by (the number) Households |

| | | | | |
|--|--|---|---|--|
| <p>Quick impact Project funded by Kitui & St. Minneapolis Diocesan Partnership.</p> | <p>To improve access to safe drinking water for school children in 31 schools within 6 parishes in Kitui County; Kyuso, Kimangao, Kamuwongo, Nguni, Nuu and Mwingi parishes.</p> | <p>Kyuso, Kimangao, Kamuwongo, Nguni, Nuu and Mwingi Parishes</p> | <p>9,300 HHs (4,836 women, 4,464 Male) and 55,020 People</p> | <ul style="list-style-type: none"> • A total of 60 tanks each of 10,000lts capacity were procured, branded and distributed. • 60 tank bases were constructed fully in the 31 schools as per the given specifications. • Installation of gutter systems was also completed. • Hygiene training was done to equip school going children with the knowledge that would help them positively adopt proper hygiene and sanitation practices for improved health • 24 School Management Committees were trained on operation and Maintenance of the roof water harvesting practices. • Monitoring was done throughout the project period to ensure quality of work and timely completion of the project. |
|--|--|---|---|--|

3. Governance

| | | | | |
|---|--|---|-------------------------------|--|
| <p>Amkeni Wakenya Funded by UNDP</p> | <p>Promoting Transformative Governance through Deepening Human Rights, Participation and Access to Justice under Devolved Governance</p> | <p>Kitui East, Kitui South and Kitui Rural Sub Counties</p> | <p>200 Youth and Citizens</p> | <ul style="list-style-type: none"> • Increased knowledge by 145 Project participants on the Kenya's constitution, Human Rights based approach to development, devolution and governance structure. • Community able and are continuously seeking transparency and accountability by identifying County Government funded projects in their wards and documenting the |
|---|--|---|-------------------------------|--|

| | | | | |
|-----------------|--|--|--|--|
| | | | | projects status of the ones already done as well as the benefit of the projects to the local |
| Lenten Campaign | | | | <ul style="list-style-type: none"> Planned and facilitated diocesan launch on 14/2/16 at Mutito Parish Reached out to selected corporates and businesses in Kitui and received contribution from Cooperative Bank of Kenya-Kitui Branch. Raised a total collection of Ksh 1, 097, 306.00 up from 549, 056 in 2015 which is 49% improvement compared to 2016 Built a house for a needy family at Kisasi |

4. Natural Resource Management /Climate

| Project Name | Project Overall Objective | Target Area | Target Beneficiaries | Achievement |
|---|--|---|--------------------------------------|--|
| Carbon Off-set project funded by Fastenopfer | Increased reduction in CO2-emissions responsible for climate change by using the new cook stoves by rural communities in Kitui | Kitui west Kitui Central Kitui Rural Sub Counties | 15,000 HHs | <ul style="list-style-type: none"> Job creation (5 lead artisans,55 artisans and 5 project staffs Approximately 2670 stoves constructed in the year 2016. Issuance of the first batch of Carbon credits by Gold standards |
| Madini yetu Wajibu wetu project funded by Diakonia. | | Kitui East (Block A and B), Kitui South (Kanziko and Simisi), Mwingi Central (Block C and D) Mwingi North (Ngaie) | 311 HHs (158 Females and 153 Males) | <ul style="list-style-type: none"> Held block based barazas to map project participants in Ngaie, Mui & Kanziku reaching out to 396 people (218 Males and 188 Females). Established 7 out of planned 8 community platforms made up of 40 participants per platform for training Community beginning to raise concerns on land mining activities with duty bearers |

| | | | | |
|--|--|--|--|---|
| | | | | <ul style="list-style-type: none"> • Duty bearers especially local admin showing increasing interest in Haki Madini activities-organizing barazas for HM to reach more people. |
|--|--|--|--|---|

Case study/Success story

KIFSP Case study on Improved Chicken

Joseph Kioko hails from Maithani villages at Yatta/Kwa Vonza ward in Kitui County. He is 39 years of age, married to one wife and has a household size of 6. **Before recruitment into the IFSP project**, Joseph as the head of the household and depends on farming of both crops and livestock has his means of livelihoods. He had 4 local chickens which he could sell at average cost of Ksh. 250 in the market due to the small body size. Due to this, he depended on casual opportunities as other livelihoods options to fulfill the basic requirements of his family. This led to school dropout of his two children and conflicts between him and his wife.

Being a farmer Kioko had little knowledge on diversification of livelihood sources. This made him rely on rain fed agriculture which is unreliable due to the frequent drought experienced in this County. As

such, the level of poverty in his household escalated over the years. Before IFSP intervention, Joseph had not been engaged in any other development organization until when he was recruited into the IFSP project which has enlightened him on other income generating activities other than crop farming.

In mid-September 2014 the community in Yatta ward was mobilized for a barazas for beneficiary and selection and registration. Joseph being one of the vulnerable individuals in Maithani village met all the selection criteria and **was recruited into KIFSP Project**. This was a new dawn to Joseph and his household, ray of hope came to his life and this served as a platform for him to share his challenges with other beneficiaries and come up with ideas to better their lives.

In February 2015, Kioko was issued with a Kenbrow cock for the local breed improvement as a means of livelihood diversification. He has taken good care of the cock and other local chicken following the poultry management training. This is what Kioko had to say about the improved chicken activity,

*“Since I was issued with 1 Kenbrow cock, I have witnessed a great change between the local breed and improved chicken in relation to the body size and their value in the market. I had **56 improved chickens** in my household in July and sold **34 mature chickens** during the month of August 2015 at a cost of 800ksh each totaling to KES 27,200, which I used to pay school (day school) fees for my children who had dropped out of school, bought three small goats, purchased foodstuff and also drought resistant seeds for planting in my 2-acre farm during the October season. I still use the chicken as food since it’s sweet and nutritious. My plan now is to sell 15 of the chicken during the Christmas holiday when the prices will be high (at least Ksh. 1000/bird) and use the money to purchase additional goats and pay school fees in January. I target 120 chicks from the balance of 6 hens and 1 cock (20 chicks per chicken), which I rear, feed them well and sell to buy some cattle for my family. I never thought one day I will be given this respect by my fellow community members who initially saw me as poor and useless but I thank CAFOD*

and Caritas Kitui for of this far, May God bless you abundantly God bless you with more to assist others who may be suffering as I used to be”

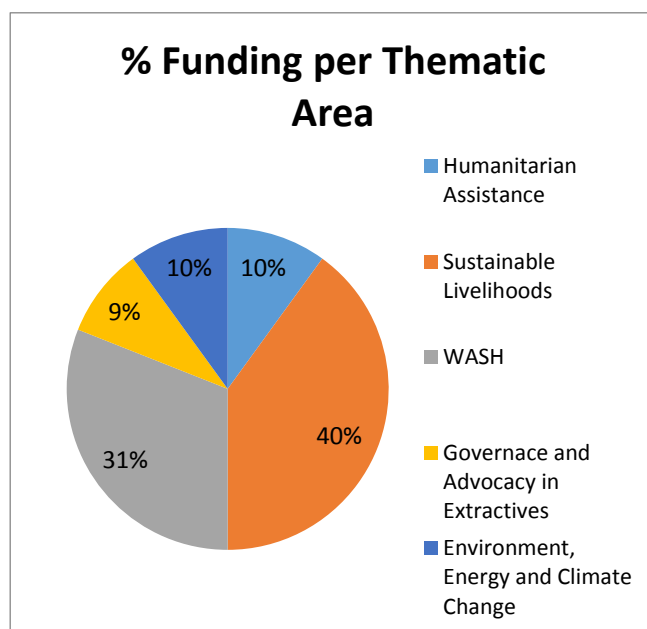


Joseph showing his Cock to IFSP project staff which weighed 6.2kgs

Chapter Three: Resource mobilization and Administration.

Caritas Kitui work is largely donor funded. The following table shows a graphical analysis of the donors who supported various thematic areas in 2016 as well as % funding per thematic area:

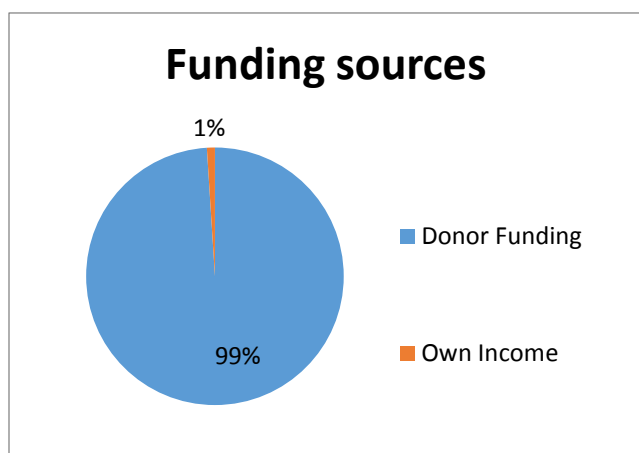
| No. | Thematic Area | Funding Partner |
|-----|--|------------------------------|
| 1 | HUMANITARIAN ASSISTANCE | WFP |
| 2 | SUSTAINABLE LIVELIHOOD | CAFOD |
| 3 | | CARITAS KOREA/ CARITAS KENYA |
| 4 | | CAFOD |
| 5 | | MISEREOR |
| 6 | | BROOKE EA |
| 7 | | TROCAIRE |
| 8 | | WASH |
| 9 | CRS | |
| 10 | ARCHDIOCESE OF ST. PAUL AND MINEAPOLIS | |
| 11 | GOVERNANCE AND ADVOCACY | DIAKONIA |
| 12 | | UNDP |
| 13 | | LENTEN |
| 14 | ENVIRONMENT, ENERGY AND CLIMATE CHANGE | FASTERNOPFER |



Brief about funding partners: During the reporting year, Caritas Kitui had 14 projects and 12 Funding partners/Donors. 13 of the projects were donor funded while only 1 project that had funding from local fundraising during the Lenten period. 4 of the funded project came to an end and 3 of these funding partners/Donors diversified their

funding into other projects. Projects that came to an end were:

- Land O lakes which was funding water component in the K-SALES Project
- Trocaire Irish Aid which was funding Sustainable Livelihoods in the ARP
- **Caritas Korea/Caritas Kenya** which was funding **Sustainable Livelihoods** in the KLSP and
- **Archdiocese of St. Paul's and Minneapolis** which was funding **WASH** in schools'



Partners who diversified their funding included:

- **UK AID Match fund** through **Trocaire**.
- Improved water management for **food security and livelihoods** project funding from **Archdiocese of St. Paul's and Minneapolis**.

There was entry of a new funding partner i.e. UNDP with Amkeni Wakenya project

Internal efforts for fundraising: In the year, Caritas Kitui has made significant efforts to strengthen its internal resource mobilization and fundraising. This has seen setting up a resource mobilization team whose first assignment was to develop resource mobilization strategy among other duties.

- Caritas Kitui has seen its staff grow to 83 staff members who manage projects at different levels. During the year, 16% of the staff transitioned to work with county government.

Chapter Four:

Challenges

- Limited / short term financing for projects from donors as a result of global changes
- Frequent droughts which affects adoption of smart agricultural technologies hence subjection of target communities to vulnerability hence increased dependency
- High literacy levels among the targets which limits capacity to engage in governance system to have needs addressed by government.
- Devolved governments posed a challenge to our work for it opened opportunity for jobs that resulted to high turnover of experienced staff to county government.

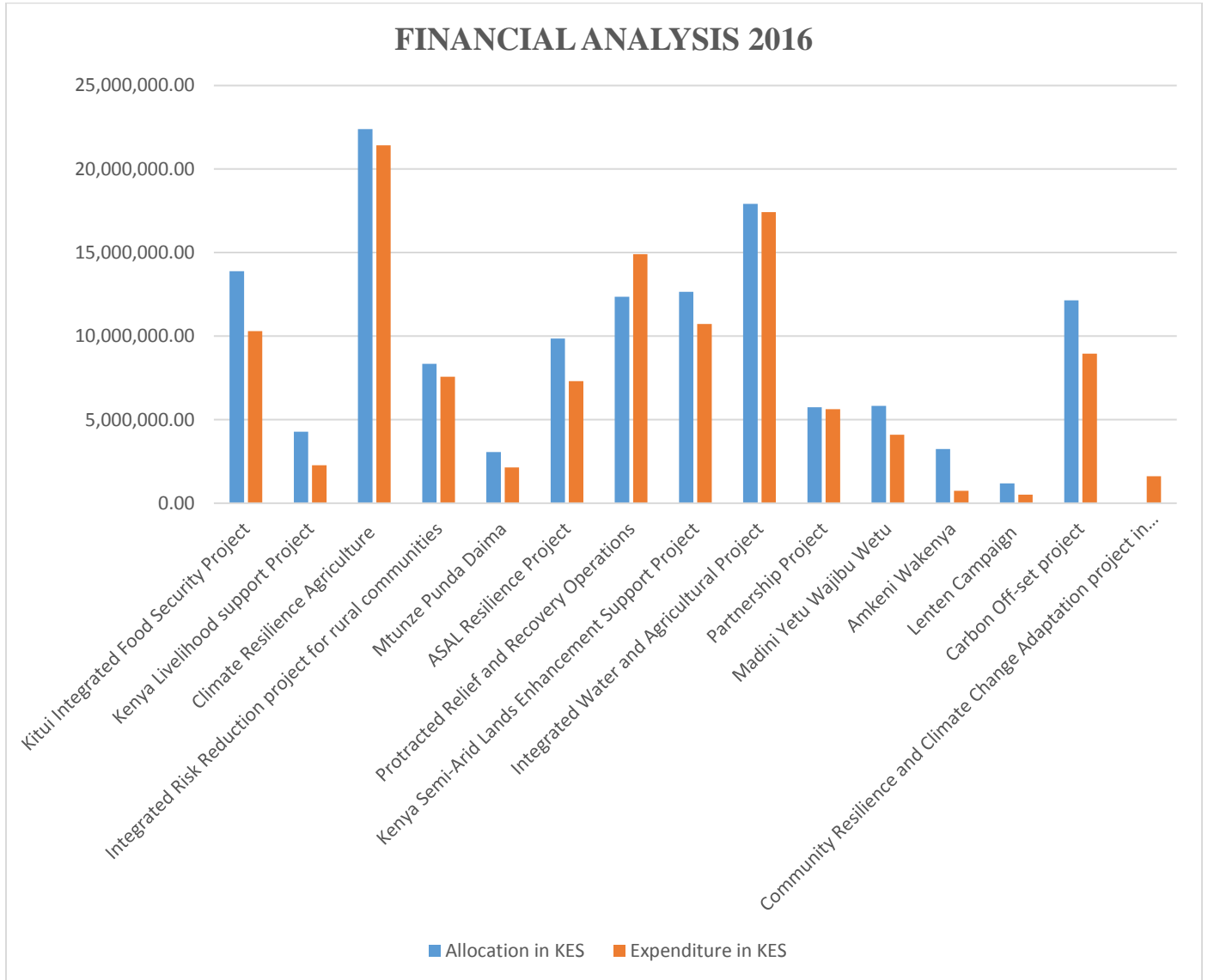
Opportunities

- Geographical Location of Caritas at the grass roots which enhances constant contact with target communities
- High demand for Caritas Kitui Interventions by communities due to experience in response to community needs in its interventions. by local and international partners among others interested parties
- Increased community and government acceptance as key partners in development
- Increased demand for capacity development among communities on devolved governance
- County governance system

Recommendation:

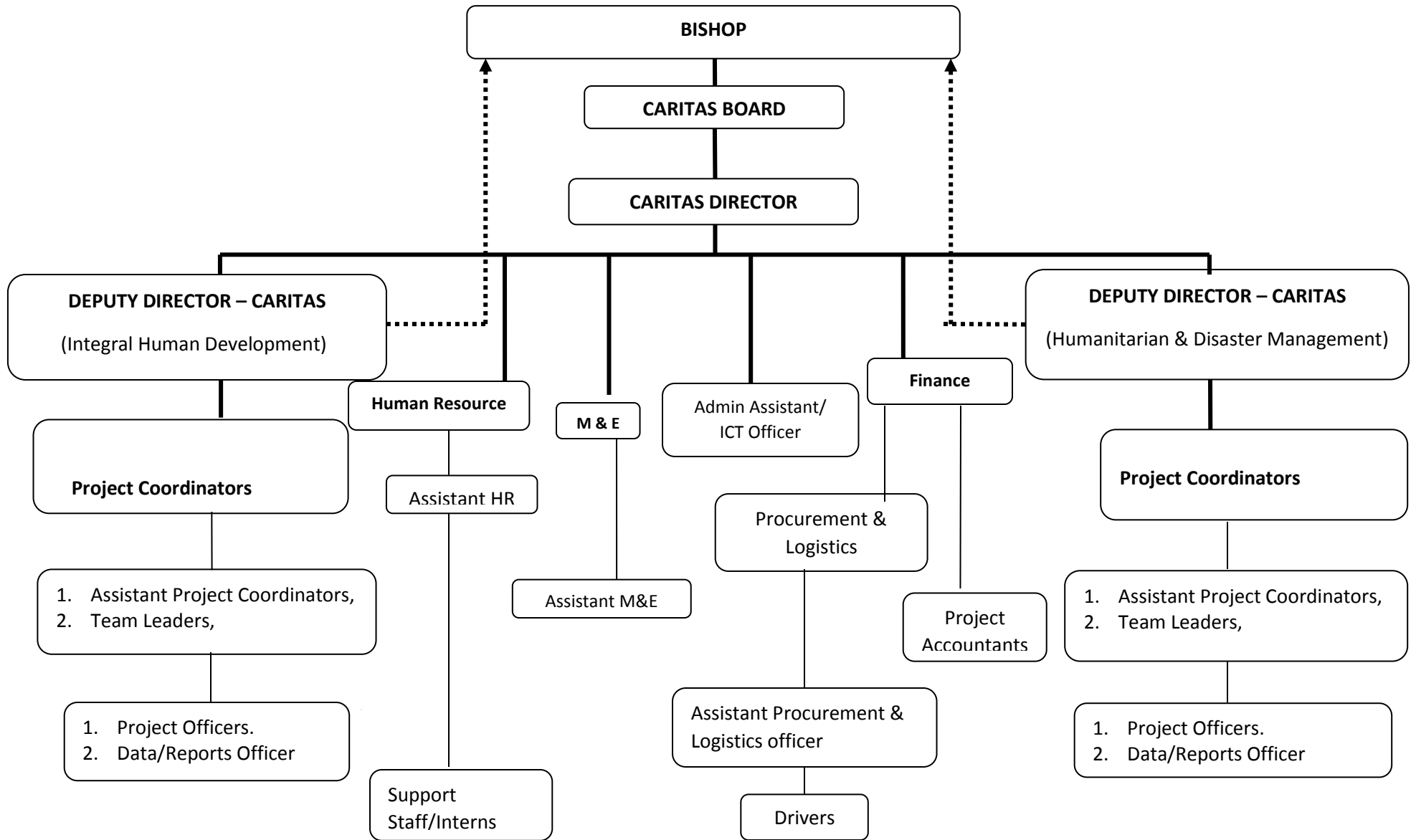
- Caritas Need to invest in long term projects that result to great impact
- Caritas to enhance its integrated approach to development for it has more impact.
- Support the resource mobilization team to be able to fundraise for the future and attain unrestricted funds to support its staff capacity development for enhanced efficiency in project management and also develop a reserve for marching fund.

Chapter Five: Financial analysis



| No. | Project | Allocation | Expenditure |
|------------------|---|-----------------------|-----------------------|
| 1. | Kitui Integrated Food Security Project | 13,889,450.00 | 10,293,360.20 |
| 2 | Kenya Livelihood support Project | 4,288,200.00 | 2,277,397.05 |
| 3 | Climate Resilience Agriculture | 22,384,116.70 | 21,422,418.20 |
| 4 | Integrated Risk Reduction project for rural communities | 8,335,515.50 | 7,569,302.00 |
| 5 | Mtunze Punda Daima | 3,058,218.30 | 2,144,351.40 |
| 6 | ASAL Resilience Project | 9,855,471.35 | 7,303,343.29 |
| 7 | Protracted Relief and Recovery Operations | 12,351,086.40 | 14,902,005.35 |
| 8 | Kenya Semi-Arid Lands Enhancement Support Project | 12,653,678.00 | 10,722,964.00 |
| 9 | Integrated Water and Agricultural Project | 17,913,480.05 | 17,422,493.65 |
| 10 | Partnership Project | 5,749,647.50 | 5,633,994.00 |
| 11 | Madini Yetu Wajibu Wetu | 5,824,588.80 | 4,103,156.00 |
| 12 | Amkeni Wakenya | 3,244,000.00 | 747,785.00 |
| 13 | Lenten Campaign | 1,190,544.20 | 505,951.35 |
| 14 | Carbon Off-set project | 12,146,054.70 | 8,944,617.26 |
| 15 | Community Resilience and Climate Change Adaptation project in semi-arid areas of Kitui. (Ngomeni and Nguni wards) | 0.00 | 1,618,675.00 |
| Sub total | | 132,884,051.50 | 115,611,813.75 |

Caritas Kitui structure



Contact us,

**P.O Box 300 – 90200
Off County Referral Hospital Road,
Kitui.**

Email: info@caritaskitui.org

Facebook : www.facebook.com/www.caritaskitui.org

Twitter : @Caritas_kitui.

Website : www.caritaskitui.org