



2017 ANNUAL REPORT



Background Information

Caritas Kitui is the Development Department of the Catholic Diocese of Kitui established in 1978 with the mandate to **promote social justice** through partnerships with communities, partners, Government and Non-Governmental Organizations

Caritas Kitui operates within Kitui County. Kitui is geographically in the lower Eastern region of Kenya and is approx. 30,496 km² in size with 1,012,709 people (2009 census). It has 8 sub Counties and 40 administrative wards. The County is classified as arid and semi-arid lands with agro-pastoral as the dominant economic activity.

The Organisation has extensive experience in community engagement on implementation of projects that enhance Integral Human Development.

Caritas Kitui runs programmes in entire Kitui County, and some selected pockets of Makueni and Machakos Counties.

Caritas Kitui is a member of Caritas Kenya and has membership in a number of strategic Alliances at National level that enhance advocacy work at national and regional level.

Our Vision

A transformed community enjoying enhanced human dignity through integral human development inspired by the Love of God.

Mission Statement

Inspired by the love of God to promote integral human development through collaborative and impartial intervention to achieve a self-sustainable community of persons.

Director Note

This report captures Caritas Kitui progress in implementation of its projects. It mirrors Caritas Kitui milestones in the fight against social injustices and lays out contributions made by different projects towards the achievement of Caritas Kitui strategic goals. The report focuses on results at outcome level thereby reporting on key contributions emanating Caritas Kitui work for the 2017. I dearly appreciate our partners who include CAFOD, Misereor, Trocaire, Brooke East Africa, WFP, Fastenopfer, Diakonia Sweden, St Paul's & Minneapolis, and Catholic Relief Services for the trust that has saw us reach out to communities in a special way. I would like to appreciate in a very special way the Caritas Board members who have provided their unwavering support and direction at the policy and strategic level. The oversight and advisory ensured Caritas Kitui remain a model in offering service to the people of Kitui and beyond. I thank the Bishop and the Vicar Generals for their continued support in ensuring that we remain vigilant in our work and that we are able to utilize every opportune moment to change lives especially of the needy and vulnerable. I thank the National and County Government for always providing the necessary support in ensuring we are safe in all the areas we operate and for taking keen interest in our work especially local mobilization, availability of technical staff when needed and dissemination of information where necessary. I express my gratitude to the Caritas Kitui Staff for their diligence, hard work, commitment, and faith in working towards the realization of an integral human development for all. God Bless All.

Ms. Florence Ndeti

Director Caritas Kitui - Catholic Diocese of Kitui.

The 2017 Caritas Kitui project work was anchored on the following five strategic focus areas;

Humanitarian Assistance

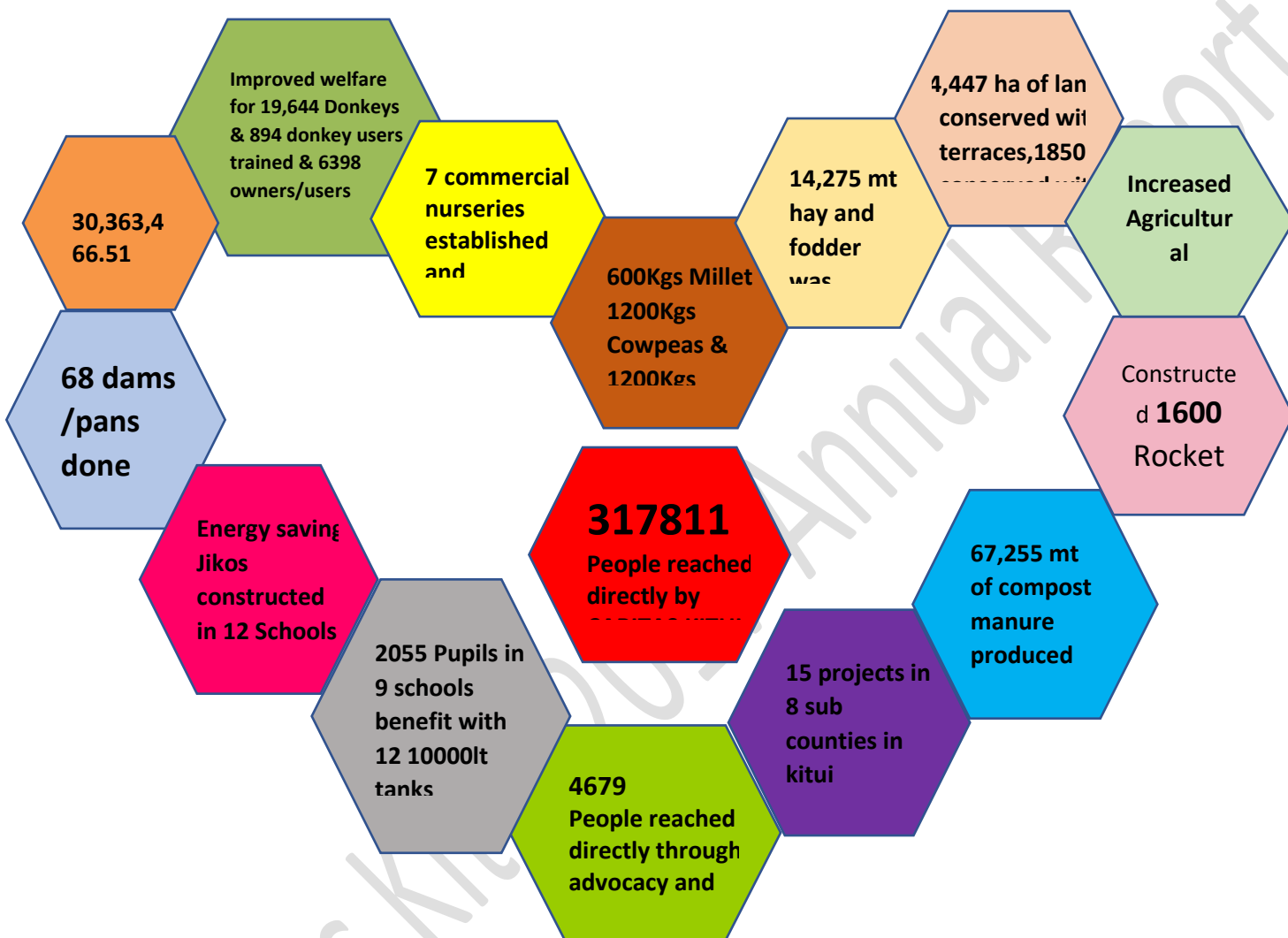
Sustainable Livelihoods

Environment and Climate Change

Governance and Advocacy

Institutional strengthening and development

CARITAS KITUI 2017 MILESTONES IN NUMBERS



This year Caritas Kitui indirectly benefited 317811 people through radio programmes, policy influence and the replication of successful Caritas program by non-Direct Projects Beneficiaries

Chapter one

Projects Implementation Context

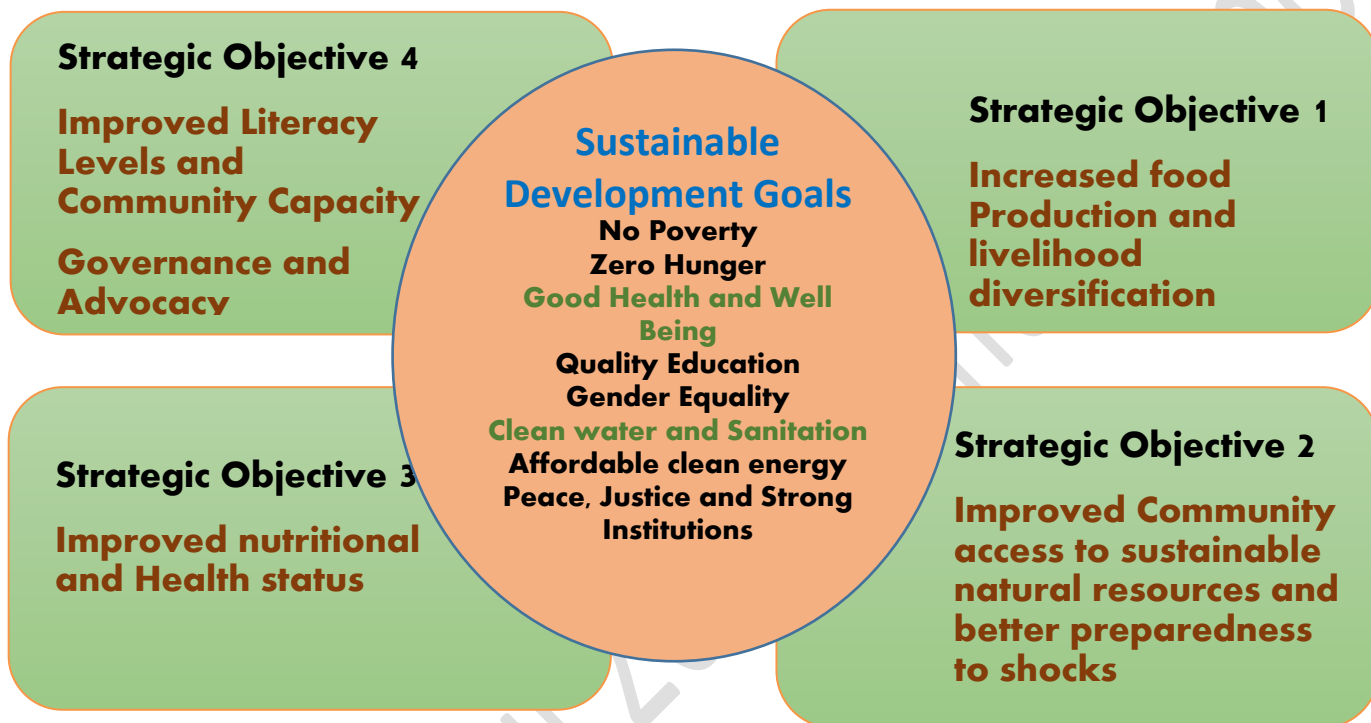
In the reporting period, Caritas Kitui work was guided by the 2016-2020 Strategic Plan and implemented various interventions across the County of Kitui. The table below shows the specific geographical coverage areas with various interventions in the reporting year:

	Caritas Kitui Intervention	Sub-County	Wards/Target Areas
1.	Carbon Offset Projects: Reduced reduction in CO2-emissions responsible for climate change by using the new cook stoves by rural communities of central and southern Kenya	Kitui West Kitui Central Kitui Rural	All Wards in these Sub-counties
2.	Amkeni Wakenya Project: Promoting Transformative Governance through Deepening Human Rights, Participation and Access to Justice under Devolved Governance	Kitui Rural	Yatta Kwa Vonza, Kisasi and Mbitini
		Kitui South	Ikanga/Kyatune, Mutomo/Kibwea and Ikutha/Kasaala
		Kitui East	Zombe/Mwitika and Mutitu Kaliku
3.	Amkeni Wakenya Project 2: Promoting Peaceful and Credible 2017 Elections in Kitui County	Kitui East, Kitui South, Kitui Central, Mwingi West, Mwingi Central, Mwingi North and Kitui Rural Sub Counties	All wards in these Sub Counties
4.	Haki Madini: Madini Yetu Wajibu Wetu Project	Kitui East Mwingi Central Mwingi North Kitui South	Kitui East (Block A and B), Kitui South (Kanziko and Simisi), Mwingi Central (Block C and D) Mwingi North (Ngaie)
5.	SNV- EOWE (Enhancing opportunities for Women Enterprises)	Kitui Central and Kitui West	All Wards in Kitui Central
6.	Cafod Project	Kitui East and Mwingi Central	All wards
7.	Kitui Integrated Food Security Project: To improve food security and resilience to climatic shocks for	Kitui Rural and Mwingi West	Yatta/KwaVonza and Nguutani wards

	target communities in Yatta/Kwa Vonza and Nguutani wards in Kitui County		
8.	Integrated Wash-Agric Project: Households have improved livelihoods security	Kitui West	Kithumula/KwaMutonga Ward
9.	Climate Resilient Agriculture Project: To transform the livelihoods of 33,609 poor women, men and children in marginalised rural areas of Kitui County	Kitui East Kitui West, Kitui Rural, Mwingi West and Mwingi Central	All wards in Kitui East except Endau/Malalani ward, All wards except Nguni and Mui wards
10.	Mtunze Punda Daima project:	Mwingi central, Mwingi west and Mwingi north	All wards in these sub counties
11.	Protracted relief and recovery operations (PRRO): To enhance the ability of the targeted households to withstand food security shocks related to recurrent droughts	Kitui Rural Kitui East Kitui South	All wards in these sub counties
12.	Justice and Peace Lenten Program	Whole Diocese/County	26 Parishes
13.	Catholic women Association (CWA)-Women empowerment Program: Promotion of human integral development through diverse empowerment programs	Whole Diocese	26 Parishes
14.	Integrated Risk Reduction Project (IRRP): To contribute to sustainable food security and livelihoods for the population in the Diocese of Kitui	Mwingi West	Kyome/Thaana Ward
15.	Community Resilience and Climate Change Adaptation in semi-arid areas of Kitui County(UKAM)	Mwingi Central and Mwingi North	Nguni and Ngomeni Wards
16.	Partnership Project	Kyuso, Kimangao, kamuwongo, Nguni, Nuu and Mwingi central parishes	31 schools

Caritas Focus in broad themes linked to the SGDs

Caritas Kitui strategic objectives provide the basis of Caritas work, which is aligned with the Sustainable Development Goals (SDGs) for greater global contribution to prosperity for all as clearly envisioned by SGDs. See the illustration below.



Chapter two:

Achievements and Successes

Caritas Kitui has had great achievements in 2017 depending on the project targets. The detailed achievements are detailed in the table below.

1. Livelihoods & Water

Project Name	Project Overall Objective	Target Area	Target Beneficiaries	Achievement/Outcome
Protracted Relief and Recovery Operations (PRRO) Programme 200736 – Asset Creation	To enhance the ability of the targeted households to withstand food security shocks related to recurrent droughts.	Kitui Rural (Kwa Vonz/Yatta and Kanyangi wards) Kitui East (Zombe/Mwitika Mutitu/Kaliku Voo/Kyama tu Endau/Malalani wards) Kitui South (Ikanga/Kyatune Mutomo Mutha Ikutha Kanziko Athi)	13 ,416 HHs and 79,398 People	Improved food, nutrition security and income diversification <ul style="list-style-type: none"> ❖ 675 ha of land conserved with Zai pits against a 3 year target of 595 ha ❖ 4,447 ha of land conserved with terraces: 3 year target 4,973 ha ❖ 516 ha of land irrigated against 3 year target of 956 ha using sunken beds, deep furrows, tied ridges ❖ 67,255 mt of compost manure produced and some applied to farms ; 3 year target is 83,106 ❖ 180 farm ponds of 215 m³ constructed and 63 lined and equipped with water pumping systems Improved livestock production and income from the livestock and its products <ul style="list-style-type: none"> ❖ 14,275 mt hay and fodder was produced and fed to livestock; the 3 year target is 11,359 mt. ❖ Improved milk production at HH level Improved access to water for livestock and human consumption <ul style="list-style-type: none"> ❖ 67 dams/pans have helped reduce distances to water points in good rains from 7km to 3kms - Mechanized dams. ❖ Improved animal health leading to improved production ❖ Farmers have more free time for other productive household activities Increasing environmental conservation and management

				<ul style="list-style-type: none"> ❖ 688,062 trees planted and are being managed; 3 year target is 819,908 (Low survival rates) ❖ 7 commercial nurseries established and being managed and are main source for tree seedlings <p>Improved capacity of community and staff to implement and sustain food security activities</p> <ul style="list-style-type: none"> ❖ 144 groups have been linked to Agricultural Market Access and Linkages (AMAL) project to help in market linkages - Challenge ❖ Trained Community Resources Persons (CRPs) - 30 artisans, 240 ToTs on tree nursery, terrace markers – 220 as a source of income.
Community Resilience and Climate Change Adaptation in semi-arid areas of Kitui County(UK AM)	Vulnerable HHs are more resilient to shocks and stresses related to climate change	Nguni and Ngomeni wards	2535 beneficiaries (1547F and 988M)	<ul style="list-style-type: none"> ❖ 718 project beneficiaries received knowledge and skills through trainings ❖ Community action plans and 2 contingency plans developed by CMDRR groups and shared with government for action ❖ 1721 beneficiaries supported with various inputs ❖ Borehole drilled and expected to serve approximately 800 Households with water for livestock and domestic use. ❖ Production groups(Green grams, Sorghum & Honey) linked to markets ❖ 15 SILC groups established and trained. Amount Savings made increased from Ksh 54800 to Ksh. 156250 and loans from Ksh.43400 to Ksh.98600.
MATCH FUND III (Climate Resilient Agriculture Project)	To transform the livelihoods of 33,609 poor women, men and children in marginalised rural areas of	Kitui central, Kitui East, Kitui West, Kitui Rural, Mwingi West and Mwingi Central	5,602 households	<p>Output 1: Small holder farmers are using sustainable and agro-ecological practices</p> <ul style="list-style-type: none"> ❖ 26 FFS groups and 20 soil and water conservation groups have been trained and engaged in soil and water conservation activities. 656 Ha of land has been conserved through terraces and zai pits. It is expected at least 328 tonnes of green grams will be harvested after OND season

	Kitui County	Sub Counties		<ul style="list-style-type: none"> ❖ 14 irrigation groups have been established and equipped with drip irrigation systems. On average, individual farmers are able to realize profits ranging from ksh3,000-6,000 in a month from sale of vegetable ❖ Generally, 3546 HHs have reported a 20% increase in crop production as a result of these interventions <p>Output 2: Engaging in local markets</p> <ul style="list-style-type: none"> ❖ 75 groups of 15 women each have been trained and supported with poultry housing inputs to encourage commercial local poultry production. On average farmers are able to earn ksh.15,000 –20, 000 in a 3 month period (after quarterly project survey) ❖ 49 youth groups; 575 farmers were trained on establishment and management of tree nurseries and supported with inputs. The groups have been able to make an average of Ksh. 15,000 from sale of tree seedlings between October – December 2016 and March-May 2017. This has helped in diversification of income sources at household level. <p>Output 3: Communities have increased capacity to manage risks</p> <ul style="list-style-type: none"> ❖ Construction of energy saving jikos in 12 secondary schools. The schools have reported decreased purchase of wood fuel cutting down by half on both cost and number of trees being cut down to provide for wood fuel. ❖ Dissemination of weather and climate information (season forecast, agro advisories and early warning information) through radio shows, and community forums. ❖ 2307 HH have made adjustments to their farming techniques in response to weather and climate information received <p>Output 4: informing Climate Resilient Policy and Practice</p>
--	-----------------	-----------------	--	--

				<ul style="list-style-type: none"> ❖ Through public awareness forums the target communities have acquired understanding of the various laws, policies and regulations such as The Kitui County Charcoal Management Act 2014, The Kitui County Sand Harvesting Bill, The Kitui County Charcoal Management Act Operational Guidelines and The Kitui Climate Change Fund Regulation. ❖ The project has also given the community and other stakeholders an opportunity to give input during formulation of The Kitui County Sand Harvesting Bill, The Kitui County Charcoal Management Act Operational Guidelines and The Kitui Climate Change Fund Regulation. ❖ Through radio shows the project has been able to disseminate climate change adaptation and resilience information through the celebration of world major days in partnership with other stakeholders ❖ Actual celebration of world major days in strategic parts of the county in collaboration with other stakeholders has encouraged communities to protect, rehabilitate and conserve the environment.
Kitui Integrated Food Security Project	To improve food security and resilience to climatic shocks for target communities in Yatta/Kwa Vonza and Nguutani wards in Kitui County	Yatta/Kwa Vonza and Nguutani wards in Kitui County	1150 HHs	<ul style="list-style-type: none"> ❖ Increased food production by 58% resulting from land conservation with terraces, adoption of new farming technologies and planting of Drought Tolerant Crops ❖ Improved environmental conservation through planting of over 5000 trees at HHs level and in degraded lands with survival rate of 67% (3350 trees surviving) ❖ Increased HH incomes from sales of improved livestock breeds with an average of over 30 birds sold per HH with income of KES. 18,000/HH in a quarter ❖ Improved access to water by 192 HHs in Nguutani ward for domestic use

				<ul style="list-style-type: none"> ❖ Increased income and nutrition security for 20 irrigation farmers along River Athi-KES. 72,500 realized from sale of vegetables (May-Sep 2017) ❖ Improved conservation of natural resources due to sustainable charcoal production and sand harvesting. Community members were sensitized on natural resource management policies through NRM committees formed
Integrated Risk Reduction Project		Kyome Thaana Ward	4000 people	<p>Farmers have diversified their range of crops cultivated and have increased their productivity sustainably</p> <ul style="list-style-type: none"> ❖ 3000 Farmers planted drought tolerant crops such as green grams, sorghum and dolichos lablab as a result of collaboration with county government - The produce will be marketed through Producer marketing groups <p>Farmers have adopted smart farming techniques and are practicing environmentally sustainable agriculture in their farms.</p> <ul style="list-style-type: none"> ❖ Tree growing - 2 to 5 fruit planted at household level in 2000 targeted households. ❖ 20 Demonstration farms established for training and adoption of dryland farming technologies by 750 Households. <p>Farmers are economically empowered and have enhanced access to savings and credit as well as markets for their products</p> <ul style="list-style-type: none"> ❖ Linking women to women and youth enterprise funds was done by the WEF officers and loan application forms shared to ready groups. ❖ Increased saving and loaning culture, the current sum of savings and borrowings being about Ksh. 1.7 Million for the month of October for 83 groups out of 98 groups <p>Farmers are empowered and are more knowledgeable on their basic human rights.</p>

				<ul style="list-style-type: none"> ❖ Enhanced knowledge on basic human rights and HIV mainstreaming among the 95 groups leading to reduced cases of stigma and drug adherence. ❖ Increased project accountability after establishment of complaint and feedback handling mechanism reached a total of 94 farmer representatives drawn from the different farmer groups. As a result of the training the project is currently handling a complaint on SILC money stolen from SILC box by a member of Tikwenda kwitu SHG in Kavaini Sublocation.
MTUNZE PUNDA DAIMA				<ul style="list-style-type: none"> ❖ 19,644 donkeys reached 30 groups of donkey owners/ with membership of 894 (115M/779F) positive behavioral change and attitude towards the donkey. Other 6398 owners/users through (public forums, market outreaches. ❖ Empowered Community able to initiate group activity like market clean up exercise and clinics (mwingi north and central) 1264 donkeys benefitting ❖ Policy draft at minister for agriculture, water and irrigation ❖ Improved quality of 67 service providers through capacity building and quarterly assessment (26 assessed using work based tool (CQM) and 130 donkeys reached through direct Brooke funded emergencies cases ❖ Improved quality by Increased Cross learning, consultations and referring among LSPs on field challenging cases or even refer cases ❖ Increased linkages between Local Service Providers (LSPs) and the donkey owners/users during training thus providing a platform for donkey owners to seek veterinary services. ❖ Increased Awareness on Donkey Welfare creation among Pupils and Community through talking walls, installation Branded water tanks (Syomikuku pry. Sch. and Nuu SHG

IMPROVED WATER MANAGEMENT FOR FOOD SECURITY AND LIVELIHOODS PROJECT	<p>Project Goal: To develop community based systems to enhance food security, environmental and living standards and livelihoods including entrepreneurship</p>	<p>NGUNI AND NUU WARDS</p>	<p>600HH (409 F & 191 M)</p>	<ul style="list-style-type: none"> ❖ 12 water tanks (10,000L) installed in 9 schools serving 2,025 pupils and students in Nguni and NUU Parishes. ❖ 7 schools have adopted sustainable operations through construction of tank shelters after Training of 115 School Management Committees (SMCs) and Board of Managers (BoMs) on Operation and Maintenance of Roof Water Harvesting Structure ❖ Construction of an Earth dam at Mwalili in NuU with a capacity of 43,875M³ serving 350 HH (domestic and livestock use) for a duration of 4 months. Water access reduced from an average of 10Kms to 2 Kms. ❖ 48Kms (96 Hectares of Land) Conserved with Soil and water structures. 600Kgs Millet, 1200Kgs Cowpeas and 1200Kgs Green grams distributed to 600 HH Seed for Asset beneficiaries as compensation for labour. ❖ Farmers have adopted alternative income sources after 45 farmers were trained on chicken husbandry whose key focus was to increase local poultry production for enterprise development. ❖ Total savings have increased from a total of Ksh 2050 by July 2017 to Ksh. 35,230 in November 2017 as a result of adoption of SILC methodology – 2 groups with 51 members ❖ 30 youth and women have acquired skills of production of interlocking blocks and supported with 2 block making machines by end of November 2017. This enterprise aims at diversifying income through linkages to potential clients. ❖ 45 influential community members and 5 county administrators acquired knowledge on good governance, devolution, opportunities under devolved systems and human rights
--	---	----------------------------	----------------------------------	--

				<p>with special attention to youth and women.</p> <ul style="list-style-type: none"> ❖ Village administrators have reported an increase and improvement in attendance and active participation during CLIDF Forums hosted by County government to trigger community led projects as a result of campaign on promotion of public participation and social accountability ❖

2. Governance and advocacy

Project Name	Project Overall Objective	Target Area	Target Beneficiaries	Achievement/ Outcome
Madini Yetu Wajibu Wetu	Promote effective community engagement and responsible stewardship of extractive resources for inclusive growth and sustainable development	Kitui East, Kitui South, Mwingi Central and Mwingi North Sub Counties	312 (Males 154; Female 158)	<ul style="list-style-type: none"> ❖ Increased community awareness through platforms capacity building on Mining Act 2016 ❖ Improved Project Accountability through established Project Accountability Forum ❖ Coordinated flow of knowledge - Community Training Guides (Coal, Limestone) ❖ Mapping of artisanal miners in Kitui County to inform future programming ❖ Increased synergy/ working relationship duty bearers – Madini Yetu Synergy Forum

Amkeni Wakenya 1	Promoting Transformative Governance through Deepening Human Rights, Participation and Access to Justice under Devolved Governance	Kitui East, Kitui South and Kitui Rural Sub Counties	3664 (Males 1,253; Female 2,411)	<ul style="list-style-type: none"> ❖ Wider outreach through 8 Civic Animators reaching out to more than 1324 citizens ❖ Project beneficiaries agitated for murraming of Ikutha- Kiusyani, Kwa Vonza road ❖ Increased community engagement in budget making through analysis and memoranda to CBEF - FY 2016/17; developed memos to input in 2nd generation CIDP ❖ Improving access to justice (use of court system) through community open clinics with Kitui CuC.
Amkeni Wakenya II	Promoting Peaceful and Credible 2017 Elections in Kitui County	Kitui East, Kitui South, Kitui Central, Mwingi West, Mwingi Central, Mwingi North and Kitui Rural Sub Counties	520 (Males 250; Female 270)	<ul style="list-style-type: none"> ❖ Successfully held a gubernatorial debate brought 119 people ❖ Commitment to Peace by Aspirants and religious leaders. ❖ 8 sub-county peace forums - 528 (24 PWDs, 179 youth, and 325 citizens) direct participants. ❖ Distributed over 3500 Peace materials ❖ Carried out 20 live radio discussions and 28 voice infomercials on peace (Aug 8th and Oct 26th 17) ❖ Inception meeting with all county assembly members-defined a long term collaboration

CAFOD Research and Advocacy Project	Promoting Pro-Poor, Climate Compatible Energy for Poverty Reduction and Sustainable Economic Development in Kenya.	Mui Basin - Kitui East and Mwingi Kitui Sub Counties	163 (Males 62; Female 101)	<ul style="list-style-type: none"> ❖ Informed advocacy agenda on energy investments by CAFOD and partners - ESIA research ❖ Enhanced understanding of the plan for coal mining projects in Kitui after Engagements with the ministry of energy and mining. ❖ Increased Community knowledge on importance of use of renewable energy and response to climate change agenda ❖ Increased Community knowledge on climate change adaptation, mitigation and causes - County Charcoal Management Act and climate change act 2016 ❖ Simplification of Climate Change Act 2016 and Kitui County Climate Change Fund Guidelines for enhanced knowledge ❖ Community able to determine their validity and relevance under Analysis of Mui Concession and Benefit Sharing agreement in the new mining act 2016 for contract transparency ❖ Increased Media Outreach – Radio Program (ongoing)
--	--	--	----------------------------	--

Enhancing Opportunities for Women Enterprises (EOWE)	To advance women's economic participation and self reliance by creating conducive environment for female entrepreneurship	Kitui Central and Kitui East Sub-Counties	20 HH (20M,20F)	<ul style="list-style-type: none"> ❖ CSOs Mapped and inducted to the project for synergy building and advocacy with relevant stakeholder with County Ministries held i.e. Ministry of Culture, Youth, Sports and Social Services, Administration and Coordination, county Assembly, ICT,NCPWs and reps from the decentralized Funds Offices ❖ Increase HH access to credits and decision making in relation to family Income, division of labor, Gender daily calendar, Better time management.
Lenten Campaign	Advocate for Peace, Justice and Human Dignity within Kitui through the Social Teaching of the Church	Catholic Diocese of Kitui	Catholic Faithful and entire community	<ul style="list-style-type: none"> ❖ Diocesan Lenten Campaign launch 2017 at Kabati Parish ❖ Increased Lenten fund after reaching out to more corporate funding partners contribution from Cooperative Bank of Kenya-Kitui Branch and some diocese suppliers ❖ Reached out to selected corporates and businesses in Kitui and Raised Lenten collection of KES 1, 000, 523 as at July 17; KES 1,097, 306.00 – 2016 and KES 549, 056 in 2015 ❖ Built a house for a needy family at Kisasi

3. Energy, Climate Change and Environment

Project Name	Project Overall Objective	Target Area	Target Beneficiaries	Achievement/ Outcome
Carbon Offset Project	Increased reduction in CO2-emissions responsible for climate change by using the new cook stoves by rural communities in Kitui	Kitui west Kitui Central Kitui Rural Sub Counties	1600 HH	<ul style="list-style-type: none"> ❖ 5380 stoves constructed ❖ 95% usage of the stoves constructed ❖ Job Creation(55 local artisans and 6 staffs) ❖ Increasing demand of cook stoves

Climate Resilient Agriculture Success Story

Nzusyo Mutua – Member of Katyethoka Farmer Field School

Katyethoka farmer field school (F.F.S) is a group of men and women whose main activity is subsistence farming. Katyethoka F.F.S is a registered group of farmers located in Kitui County, Kitui central Sub County, Township ward, Katyethoka village who were reached out in the year 2015 under Climate Resilient Agriculture project implemented by Caritas Kitui, in partnership with CAFOD funded by DFID- UKAID. All the farmers are subsistence farmers practicing traditional farming methods and harvesting less than a bag of maize. Kitui County experiences unpredictable rain patterns and this being another constraint to farmers. The farmers organized themselves into a group and were targeted to benefit in an F.F.S setup. The group has a demo plot given out by one of their members where they meet weekly on Tuesdays to learn modern farming techniques and the importance of planting drought tolerant crops and replicate the same on their individual farms.

In February 2017 the farmers started the FAO - UN curriculum approach on Farmer Field Schools in collaboration with the county Agricultural extension officer in charge of township ward Benjamin Maingi. The aspects of conservation agriculture and soil, water harvesting structures and open field irrigation are some of the dry land techniques trained to farmers. Apart from the training, five members of the katyethoka F.F.S group were trained on terraces laying and each farmer was equipped with a terrace laying kit to support other group members in marking conservation structures such as terraces and Zai pits. The project supported the farmers with drought tolerant crops such as 80 Kgs of N26 variety of green grams and the county government supported them with 24kgs of KS20 variety of green gram, 24kgs of cow peas and 10kgs of Gadam Sorghum. Benjamin Maingi (Agricultural extension officer) has been of great help to the farmers since they easily get access to the seeds provided by the government and also offers technical advisory services from time to time.

Nzusyo Mutua a member of the Katyethoka F.F.S main means of livelihoods is farming. He is married and has 5 children but currently he is taking care of two one of them in polytechnic. He replicated the Zai pit technology in his farm for farming various crops such as tomatoes, kales, maize, fruit trees and spinach. He has also laid terraces in his farm. During the dry seasons, Nzusyo uses water from his small manually constructed farm pod to water his crops. He says *“This group has helped me learn the Zai pit technology, which I did not know earlier. This technology uses little water which saves me time unlike before where I watered three times in a week and now two times in a week. The harvest of maize has been plenty more than I expected, I harvested 3 to 5bags of maize and in the previous season I harvested 13bags and I expect to harvest more this season because the rains have not failed”*. He sold 10 bags at a cost of ksh. 3000 each making a total of ksh. 30, 000. Nzusyo further says *“I have been able to pay school fees without any difficult and my family can even afford three meals a day, I am so grateful to CAFOD, Caritas Kitui and the Agricultural officer for their support, may God bless you”*

Photos



Section of Nzusyo's farm during land preparations before the rains



Same section of land after the rains. The bananas are maturing, the beans planted in the constructed terrace are ready and about to be harvested and the maize planted in the zai pits at the flowering stage.



<i>Nzusyo manually constructed a farm pod after the MAM rain. He says that the water will serve him until the next season (OND 2018) and he will use it to grow vegetables</i>	<i>Nzusyo harvesting some oranges from his farm</i>
---	--

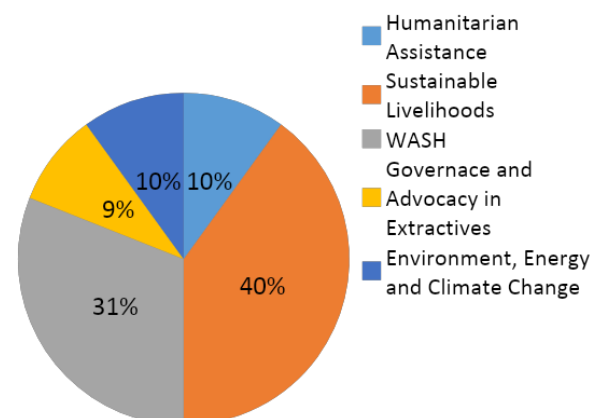
Chapter Three: Resource mobilization and Administration.

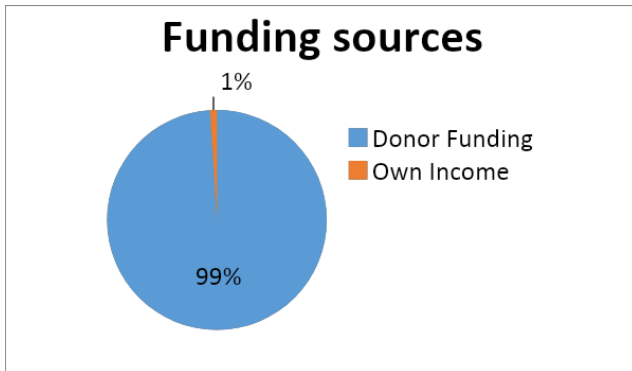
Caritas Kitui work is largely donor funded. The following table shows a graphical analysis of the donors who supported various thematic areas in 2017 as well as % funding per thematic area:

N o.	Thematic Area	Funding Partner
1.	HUMANITARIAN ASSISTANCE	WFP
2.	SUSTAINABLE LIVELIHOOD	CAFOD
4.		MISEREOR
5		BROOKE EA
6		TROCAIRE/DFID
8	WASH	CRS
9		ARCHDIOCESE OF ST. PAUL AND MINNEAPOLIS
10	GOVERNANCE AND ADVOCACY	DIAKONIA
11		UNDP
12		SNV
13		LENTEN
14	ENVIRONMENT, ENERGY AND CLIMATE CHANGE	FASTENOPFER

Brief about funding partners: During the reporting year, Caritas Kitui had 16 projects and 14 Funding partners/Donors. 14 of the projects were donor funded while only 2 projects that had funding from local fundraising during the Lenten period for Lent project and CWA . 4 of the funded projects came to an end and 3 of these funding Partners/Donors diversified their funding into other projects. Projects that came to an end were:

% Funding per Thematic Area





Chapter Four:

Challenges

- Donor conditions that limit budgets to support key components like branding Organization/ project had limited visibility/branding and communication of its work. Proper budgeting of project visibility and communication is required (website, Facebook and documentation)
- Unanticipated Conflicts arose during project implementation. Need for integration of community grievances and redressal mechanism across all projects
- New project staff had a hard time/ slow/ poor understanding of organization & projects management structure. The Organisation should have a standard HR Staff induction package and project specific requirements.
- High literacy levels among the targets which limits capacity to engage in a governance system to have needs addressed by the government.
- Inadequate vehicles in relation with the number of projects. 7 vehicles serving 14 Projects leading to high usage of taxis (KES 2,325,500 for the year 2017) hence a need to buy more vehicles at least 3 in number.

Opportunities

- Geographical Location of Caritas at the grass roots which enhances constant contact with target communities
- High demand for Caritas Kitui Interventions by communities due to experience in response to community needs in its interventions. By local and international partners among others interested parties
- Increased community and government acceptance as key partners in development
- Increased demand for capacity development among communities on devolved governance

Recommendation:

- Local-Level knowledge/ Participatory project identification of new interventions was the most effective way of identifying the core problem(s) and potential

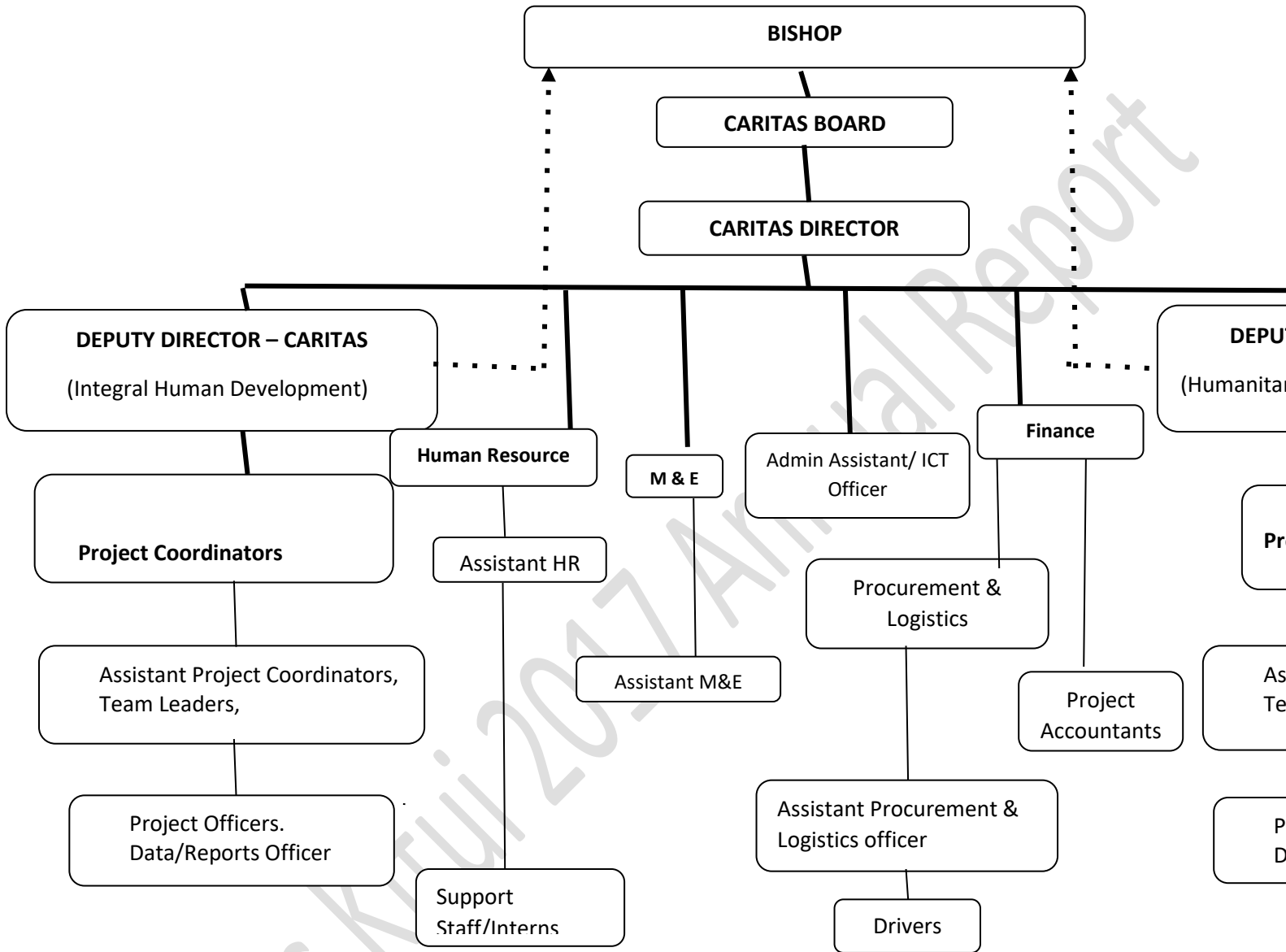
solutions, as well as building stakeholder buy-in. The organisation should ensure that the stakeholders are continuously engaged in the project identification.

- Support the resource mobilization team to be able to fundraise for the future and attain unrestricted funds to support its staff capacity development for enhanced efficiency in project management and also develop a reserve for marching funds.
- Participatory project M&E was important as projects were able to react more effectively to crisis or changes in the project environment. Moving forward, more resources should be allocated for the M&E unit.
- For future programming and resource mobilization, there is need for feasibility study and needs assessment
- In order to achieve high value for money there should be increased supplier competition and market surveys by the procurement department.

Chapter Five: Financial analysis

No	Project	Allocation	Expenditure
1.	Kitui Integrated Food Security Project	8,547,522	5,657,504
	Climate Resilience Agriculture	17,854,008	10,790,944
	Integrated Risk Reduction project for rural communities	7,879,388.98	7,327,830.84
	Mtunze Punda Daima	18850000	7495442
	Protracted Relief and Recovery Operations	10,646900.50	10,442,171.1
	Integrated Water and Agricultural Project		
	Partnership Project	12412779	11928412
	Madini Yetu Wajibu Wetu	5,000,000	
	Amkeni Wakenya II	2,070,000	2070000
	Amkeni Wakenya 1	4,050,000	
	Lenten Campaign	1, 000, 523	
	SNV – EOWE	1,335,900	743102
	Cafod Project	14098802	8440589
14	Carbon Off-set project	17,615,713	9,531,975
15	Community Resilience and Climate Change Adaptation project in semi-arid areas of Kitui. (Ngomeni and Nguni wards)	29,420,231	25,375,863
Sub total		132,884,051.50	115,611,813.75

Caritas Kitui structure



Caritas Kitui
St. Augustine Secretariat,
PO Box 300,90200,
Kitui Kenya
Email: info@caritaskitui.org
Www. Caritaskitui.org
Facebook: Caritas Kitui

Caritas Kitui 2017 Annual Report