



2020 CARITAS-KITUI ANNUAL REPORT

CATOLIC DIOCESE OF KITUI

Vision:

*A Sustainable community
Inspired by the Love of God*

Mission:

*Enhance integral human
development through
partnerships and innovations
to achieve a sustainable
community*

+254 202408351

P.O Box 300 – 90200

Off County Referral Hospital Road,
Kitui.

Email:

info@caritaskitui.org

Facebook:

www.facebook.com/www.caritaskitui.org

Twitter: @Caritas_kitui.

Website:

www.caritaskitui.org

Foreword

Rt. Rev. Joseph Mwangela, Chairman Board of Directors, Caritas Kitui

1. *Passport Photo*
2. *Note*

Preface

Ms. Florence Ndeti Director, Caritas Kitui

1. *Passport Photo*
2. *Note*

About Caritas Kitui

Caritas Mission and Vision are anchored on the Pastoral Strategic plan

Vision: A sustainable community inspired by the Love of God.

Mission: Enhance integral human development through partnerships and innovations to achieve a sustainable community.

Organization Summary:

Caritas Kitui is the Development Department of the Catholic Diocese of Kitui. Caritas is a Latin word that means Works of Charity/Mercy. The Department was established in 1974 under Community Education whose focus was on Humanitarian Assistance and Establishment of structures for social development. In 1977, the Department became a fully-fledged development department and was consequently renamed as Caritas Kitui in 2010.

Geographical Coverage:

Caritas Kitui works in Kitui County and 3 sub-counties of Makeni County reaching approximately 240,000 beneficiaries in its various programs.

Caritas Core Thematic Areas

The Caritas Kitui mandate is, guided by its 2018 - 2022 Strategic Plan <https://caritaskitui.org/strategic-plan/>.

Caritas Kitui programmatic areas are:

1. Sustainable Livelihoods
2. Humanitarian and Disaster response
3. Environment and Climate Change.
4. Governance and Advocacy
5. Institutional Development

Approaches used

1. Ecosystem Based Adaptation (Agro-ecology, Regenerative Agriculture and Integrated Watershed Management)
2. Human Right based approach.
3. Gender responsive approach
4. Community Managed Disaster Risk Reduction (CMDRR)

5. Community Based Targeting (CBT) and Asset Based Community Development
6. Value Chain Development approach(VCD)
7. Media approach
8. Social inclusion approach.

Unique Capabilities/Differentiators

- Clear Organizational Structure with a functional board and a Strategic Plan with defined objectives
- Credibility and Good reputation/trust by our partners and stakeholders including local community
- Organization systems, policies and controls that ensure competence in management of diverse partner grants.
- Skilled and experienced Staff that increases donor confidence in the organization.
- Track record in implementation of projects and programs in the five thematic areas
- Wide Catholic Church networks and partnerships locally, regionally and internationally

Past Performance

- Protracted Relief and Recovery project funded by WFP: 20 Years partnership in Livelihoods through environmental conservation and integrated agricultural technologies
- Integrated WASH and Agriculture Project funded by Catholic Relief Services (CRS): 10 years' partnership in integrated WASH Activities
- CRA (Climate Resilience Agriculture funded by UKAID Through CAFOD 3 years' partnership in integrated Livelihood's activities
- Agricultural and Market and Access Linkages Project (AMAL) funded by WelthungerHilfe 3 years Project in integrated Livelihood's activities through community-based land and environmental conservation technologies.

Key Personnel Experience:

Caritas staff are competitively recruited to suit specific skill set some of which are: -

- Community Development
- Agronomy and Environmental conservation and Protection
- Natural Resources Management
- Livestock management and Veterinary

Innovation Transformation Sustenance

- Gender and social inclusion
- Safeguarding and protection
- Project management
- Water Sanitation and Hygiene

Organization Contact Details

For more information about Caritas Kitui visit finds us in:

- **Physical Location:** St. Augustine Secretariat Off Kitui County Referral Hosp Road,
- **Physical Address:** 300 - 90200
- **Phone Contact:** +254 020 2408351
- **Email:** info@caritaskitui.org
- **Website:** www.caritaskitui.org
- **Twitter:** @Caritas Kitui
- **Facebook:** Caritas Kitui

Caritas Kitui Structure, Governance and Management

The Board

CARITAS KITUI BOARD MEMBERS

**Florence Ndeti -
Secretary**

**Rt. Rev. Joseph
Mwongela - Chair** **Rev. Fr. John Mwandi**

Mr. William Maema

Peter Saitoti - X official

Mr. Antony Mbandi

Dr. Joseph Nzomoi

Mrs. Jane Kibati

Dr. Naomi Mangatu

Mr. Francis Kamau

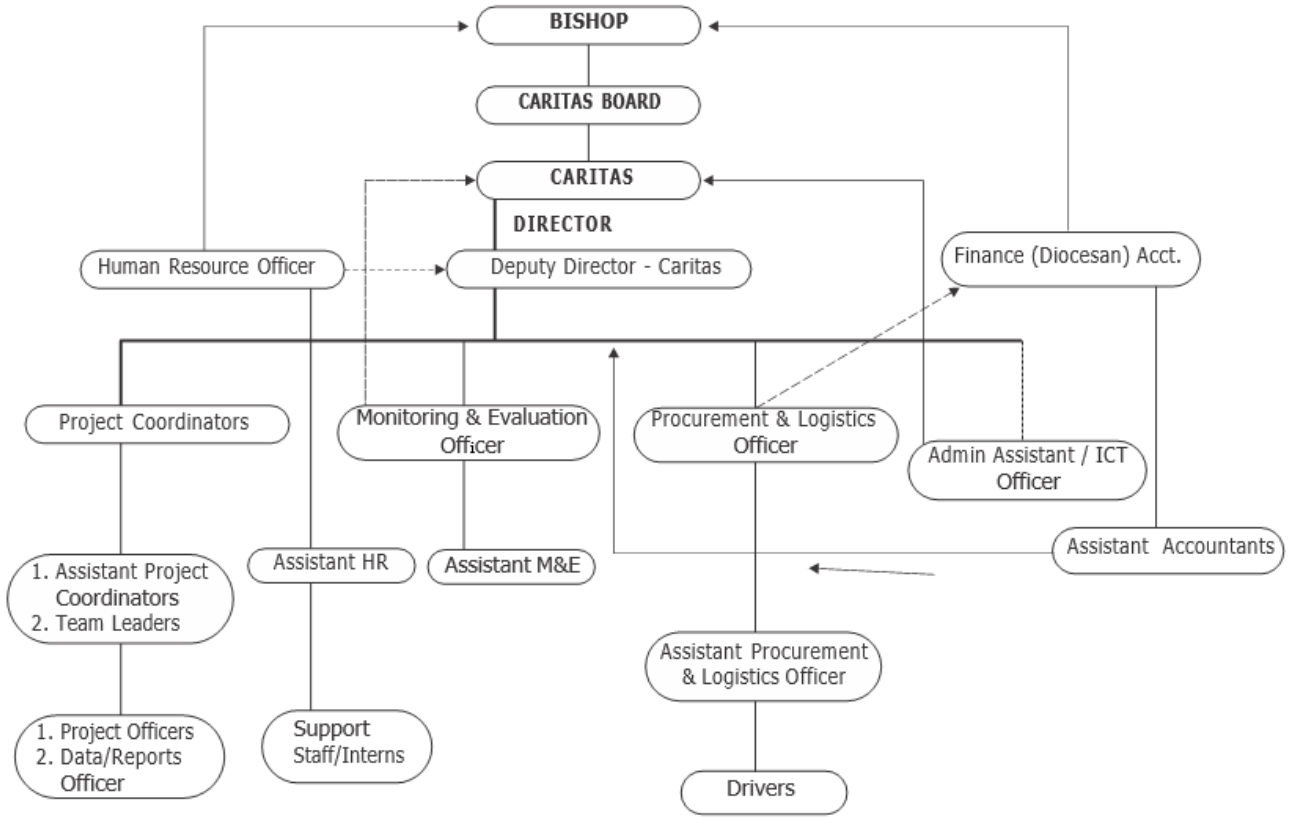
Mr. Nicholas Mulila

**Dr. Paschalia
Mbutu**

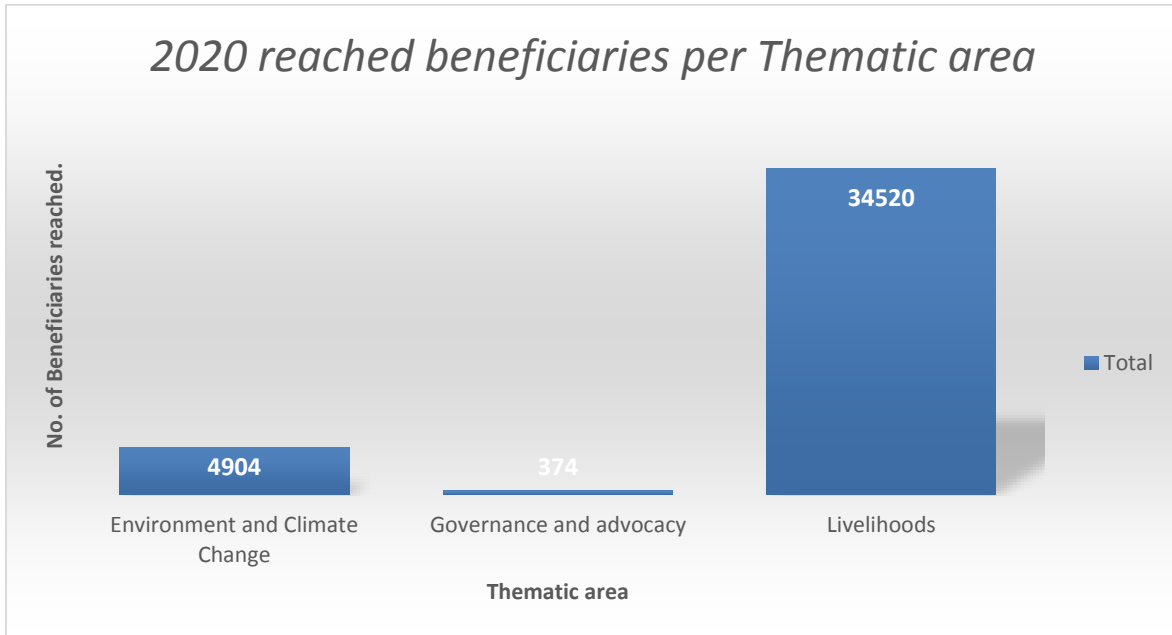
Mr. Kiema Mwandia



THE CARITAS ORGANOGRAM



Caritas Kitui Work at Glance



Caritas work at a glance

Caritas Kitui implemented 12 projects in both Kitui and Makueni Counties. Implementation of these projects was guided by the 2018 – 2022 strategic plan.

These projects were implemented under the five thematic areas of Caritas Kitui. The following tables show the number of beneficiaries reached per thematic area and the specific geographical locations of the projects' coverage.

1. Sustainable livelihoods

Caritas Kitui had 7 projects under sustainable livelihoods in the year 2020. Sustainable Livelihoods Projects are interventions to protect and support the means of living and survival by the local community. The projects covered both Kitui and Makueni Counties. A total of **70120 beneficiaries** were reached under sustainable livelihoods in the year 2020 by the projects below.

S/No.	Project Title	Objective	Sub county	Wards
1)	Integrated Risk Reduction Project	Increased community preparedness and resilience to risks through a people led approach	Mwingi North Sub county	Kyome Thaana Ward
2)	Kitui Integrated Animal Welfare and Livelihoods Project (KIAWLP)	Enhanced welfare of 36,500 working donkeys for Sustainable Community in Kitui County by 2021	Mwingi North Mwingi Central Mwingi West Kitui West Kitui South	Mwingi North: Ngomeni, Tseikuru, Kyuso, Mumoni, Waita Mwingi Central: Nuu, Nguni, Kivou Mwingi Central, Mui, Mwingi West: Kiomo/Kyethani, Kyome/Thaana, Nguutani Migwani, Kitui West: Kauwi, Mutonguni Kithumula/kwa Mutonga & Matinyani

				Kitui South: Ikanga Kyatune Mutomo/Kibwea, Kanziko, Mutha, Athi & Ikutha
3)	Strengthening market linkages for improved food and nutrition security of agro pastoralist households in Kitui and Makueni Counties (AMAL Project)	Improved Food and Nutrition security for agro pastoralist HHS in Kitui and Makueni counties.	Kitui Rural and Kitui South in Kitui county and Kibwezi East, Kibwezi West and Makueni Sub counties in Makueni County.	Kanyangi, Ikutha and Athi wards in Kitui County Ivingoni/Nzambani, Masongaleni, Mtito/Andei, Makindu, Nguumo, Kathonzweni wards in Makueni county.
4)	Kitui Integrated Food Security Project (IFSP 2)	To improve food security and resilience to climatic shocks for target communities in Yatta/Kwa Vonza and Nguutani wards in Kitui County	Kitui Rural and Mwingi West Sub Counties.	Yatta/Kwa Vonza ward and Nguutani ward
5)	AgriFi Kenya Climate Smart Agricultural Productivity Project	Climate change adapted and market integrated smallholder agriculture aiming to reduce the national food deficit and improve agriculture sector competitiveness strengthened	Kibwezi East, Kibwezi West and Mwingi West.	Ivingoni/Nzambani, Masongaleni, Mtito/Andei, Makindu and Nguumo in Makueni County.
6)	Community Resilient Building and sustainable natural resource management in Kitui county	To ensure that vulnerable HHs are more Resilient to shocks and stresses related to climate change	Mwingi North and Mwingi Central.	Ngomeni and Nguni Wards.

7)	Integrated food security and improved water Management for Food Security and Livelihoods	To develop community-based systems to enhance food security, environment, living standards and livelihoods including entrepreneurship.	Mwingi Central	Nguni and Nuu Wards
----	---	--	----------------	---------------------

2. Environment & Climate Change

Through this program Caritas Kitui undertakes efforts that promote environmental protection, mitigation and response to climate change. Caritas Kitui reached a total of **19,600 beneficiaries** under environment and climate change through the following project;

S/No.	Project Title	Objective	Sub county	Wards
1)	Carbon Offset Project	Increased reduction in CO2-emissions responsible for climate change by using rocket cook stoves by rural communities of Kitui County.	Kitui Central, Rural, West, Kitui East, South and Mwingi West sub-counties.	All wards in Kitui Central, Rural and West. 2 wards in Mwingi West (Migwani and Kyome/Thaana), 3 wards in Kitui South (Ikanga, Mutomo and Athi) and 2 wards in Kitui East (Mutitu/Kaliku and Zombe/Mwitika).

3. Governance and Advocacy

This program seeks to strengthen the voice of communities, especially the most vulnerable so that they are able to articulate their needs, defend and safeguard their rights. A total of **1790 beneficiaries** were reached under governance and advocacy in the year 2020 by the projects below.

S/No.	Project Title	Objective	Sub county	Wards
1	Madini Yetu Wajibu Wetu (Haki Madini Kenya)	Promote effective community engagement and responsible stewardship of extractive resources for inclusive growth and sustainable development	Kitui East, Kitui south, Mwingi Central and Mwingi North.	All wards in the 4 sub counties

2	Integrating energy into County Policy, Planning and implementation strategies	Effective integration of clean energy into County plans in Kitui county	All 8 Sub Counties in Kitui County.	All wards.
3	Lenten Programme	Promoting Justice and Peace	Kitui County	All the regions of the county

4. Humanitarian and emergency Response

Caritas Kitui through her Partners offers material and logistic assistance to vulnerable people to save lives, alleviate suffering and maintain human dignity during and after disasters caused by natural hazards or man-made, as well as empower communities to prevent and strengthen preparedness for when such situations occur. A total of **18,976 beneficiaries** were reached through the following projects in the year 2020 to realize the above course.

S/No.	Project Title	Objective	Sub county	Wards
1)	Covid – 19 Response	To prevent and mitigate Covid – 19 diseases.	Entire Kitui and Makueni Counties	Entire Kitui and Makueni
2)	Drought Emergency Project	Save lives and rebuild livelihoods of flood affected communities in Kitui County	Mwingi North and Mwingi Central	Mwingi North and Mwingi Central Wards

Key Programme Achievements and Impact 2020

1 Livelihoods

S/No.	Project Name	Project Overall Objective/ Goal	No. of Beneficiaries Reached	Key Achievements
1	Kitui Integrated Food Security Project	To improve food security and resilience to climatic shocks for target communities in Yatta/Kwa Vonza and Nguutani wards in Kitui County	Target Beneficiaries: 600 HHs 495 Adults (357F, 138 M), 50 Youth (36F, 14M) , 30 elderly (18F, 12M), 15 PWDs (11F, 4M) and 10 PLWHIV (10F)	<ul style="list-style-type: none"> ● Increase in crop yields from an average of 2 bags at baseline to 3-4 bags per acre currently through adoption of modern dry land farming skills/technologies ● Increase in levels of household income from average of KES 4,705 (at baseline) a month to average monthly household income of KES 6,373 currently through sale of surplus farm produce and returns from small businesses initiated from SILC loans ● Improvement in savings and access to credit among beneficiaries through local 14 Saving and lending schemes (SILC) groups operational with a total loan fund of KES 602,400 within a duration of 6 months ● Diversification of livelihoods through small scale vegetable production, fruit farming and small/petty businesses. This is attributed to access to income from sale of crops and livestock products and credit from loaning schemes
2	Integrated Food Security and Improved Water Management for Livelihoods phase III (IFSWMLs)	Increase access to clean and adequate water for human consumption, livestock and agricultural productivity including entrepreneurship to 1500 households in Nuu ward	1,500	<ul style="list-style-type: none"> ● Rehabilitation and desilting of 1 Earth Dam (Kimonyongo) from 35,000m³ to 48,000m³ water capacity for 350HHs in 6 villages. ● 1 Water Management Committee comprising of 17 members trained on governance with bias to operation and maintenance of the infrastructure ● Two pit latrines constructed and are being utilized by the local communities ● 1 Water Management Committee of 11 members (F9 M3) trained on good hygiene and sanitation practices which are geared towards reduction of water borne and water related illnesses to the target beneficiaries. ● One SILC group of 29 Members (F25 M4) trained and have adopted the saving culture, individual members saving at least Ksh.100 – 500 monthly. Their cumulative savings stands at Ksh.109, 495.00. ● 4,000 interlocking blocks fabricated by Imani Group out of which 2,000 blocks were sold raising Ks. 50,000.00.

				<ul style="list-style-type: none"> 2 vegetable plots established for kales, Amaranth and tomatoes for domestic consumption and income generation from the surplus.
3	KIAWLP (Mtunze Punda Daima Project)	Improve welfare from working donkeys and Mules by reducing suffering the animals now and future	Annual target for 2020 is 9,125 owners and 18,250 donkeys. Annual reach rated 107.7%; that is 9,828 (2,132M/7696F) against an annual target of 9,125. For donkeys a percentage of 108.4% was reached; that is 19,782 against the annual target of 18,250.	<ul style="list-style-type: none"> Expanded collaboration and working partnership: This formed the new frontier for expanded reach and sustainability of animal welfare awareness to communities. 23 CWA Parish leaders, 26 adult education tutors, 30 CHVs, 18 Champion Donkey Welfare groups, 17 DCC schools. Improved competence and confidence on case management through hand-on capacity building for LSPs. Caritas Vets conducted 32 hands-on capacity building sessions for 30 LSPs across Kitui County using THEMATIC Field days (Clinics). 1,359 owners reached (448M/991F) and with 3,556 donkeys. Food Security and Social economic empowerment: Integration of Agro-ecological approach on micro-agriculture (Kitchen Gardening) achieved for 10 donkey welfare groups in Mwingi Central and North (262 Owners – 36M/226F and 491 donkeys. Savings and Internal Lending as a graduation model promoted to 18 groups (847 donkey owners/users working with 1743) which has provided a safety net for women at rural areas Public Participation on Donkey welfare policy: Mtunze punda Daima project held a public participation on Donkey welfare policy document in collaboration with the county ministry for agriculture across 4 sub counties in Kitui. The public views were integrated on the document making a major milestone on achieving tangible regulation on donkey welfare.
4	Integrated Risk Reduction Project	To contribute towards securing the livelihoods of the people in the Diocese of Kitui	1,500 Beneficiaries	<ul style="list-style-type: none"> 450 copies of farmers guide on good agricultural development, printed and distributed to staff and farmers to enhance their Knowledge and practice of productive agriculture.

				<ul style="list-style-type: none"> ● Improved poultry production with an increase from an average of 9 chickens per farmer at the start of the second phase of the project to an average of 31 at the end of that phase. This has translated to increased household income and better living standards for the farmers with a case example being Hannah From wendo SHG in Musuani sublocation who manages to pay for her child school fees to a private school (Ndoto njema academy) at an average of 20,000 each term from poultry farming ● Through the project' interventions, farmers formed a producer and marketing cooperative society (Wikivuvwa marketing Cooperative society limited) and the current membership stands at 30% of the project target farmers against a target of 50% of all the farmers supported by the project. ● Production of a project documentary of the success realized in the last phase.
5	KEN 1170 Agricultural Market Access and Linkages (AMAL) PROJECT	Food and nutrition security for agro-pastoralist households in the project area (parts of Kitui and Makueni Counties) has increased, their agricultural productivity and their integration into sustainable value chains has improved	1900 (850 - Kitui County and 1050 Makueni County)	<ul style="list-style-type: none"> ● 15 FOs were identifies / formed and established VSLAs each ● 4 storage facilities were constructed and were aggregating and selling farm produce (Green grams - 74.7 MT, sold at 5,749,400/=) ● 21 Mother to Mother (M2M) groups established irrigation demo sites and kitchen gardens ● The project trained 11 M2M groups, constructed 11 poultry demo units and stocked them with 1100 chicks – KALRO improved kienyeji. ● Trained 7 M2M groups on goat rearing, constructed 7 goat demo houses and stocked them with 35 gala goats ● Trained 3 M2M groups on bee keeping and supported them with 10 langstroth beehives each ● 1.526 community members adopting and practicing better nutrition & dietary diversity
6	Community Resilient Building and sustainable natural resource management in Kitui county	Vulnerable communities living in arid and semi-arid lands are resilient and benefit from sustainable use and management of natural resources	2,530 (1,925F, 605M) Inclusive of:50 - PLWD, 22 - PLWHIV, 76 - Elderly and 32 - Chronically ill	<p>1. Honey Value addition and linkage to market: CBOs Supported with value addition knowledge, skills and materials for better marketing, 718 kgs of value added honey sold making Ksh.502, and 600.</p> <p>2. Established 2 demonstration farms and 10 model farms: 1542 farmers reached and received</p>

				<p>Mentorship on agro ecology for sustainable food production and NRM.</p> <p>3. Market linkage: 10.6 tons of green grams sold through aggregation centers to (TruTrade)@62 per kg</p> <p>4. 2 Community based Organization strengthened: The 2 CBO to help in collective marketing and advocacy (collectively supplied chicken)</p> <p>5. Improved access to credit through SILC Model: Increase in value of savings and loans from KS 392150 and Ksh.295, 600 to KS 1,415,670 and KS 860,145 as at November 2020. Some SILC Groups have acquired productive assets and started businesses through SILC</p> <p>6. Social Inclusion achieved where Special interest groups were reached through various interventions: PLWD, Elderly, PLWHIV and the critically ill now engaged in the project</p> <p>7. Improved nutrition and income from poultry: consumption and sale of chicken and eggs. 2 groups reported cumulative income of KS 236,400 as at Sept 2020.</p> <p>8. Climate change policy developed and at the cabinet stage as at December 2020.</p> <p>9. Improved nutrition and income from poultry: consumption and sale of chicken and eggs. 2 groups reported cumulative income of KS 236,400 as at Sept 2020.</p>
7	AgriFi - Kenya Climate Smart Agricultural Productivity Project.	Climate change adapted and market integrated smallholder agriculture aiming to reduce the national food deficit and improve agriculture sector competitiveness strengthened	Kibwezi East, Kibwezi West and Mwingi West.	<ul style="list-style-type: none"> 1.920 tons of Sorghum (Kamani KM32 Variety) distributed. 750 farmers received 2.6 kgs @-primary seed stock for seed bulking and 20kgs for 20 demo plots Seeds multiplication. 1.190 tons of 5 Cowpeas varieties (Kat Kunde, Tamu, Faulu, Tumaini and Soko) distributed. 750 farmers received 2 kgs @-primary seed stock for seed bulking and 40kgs for 20 demo plots Seeds multiplication.

2. Environment and Climate Change

S/No.	Project Name	Project Overall Objective/ Goal	No. of Beneficiaries Reached	Key Achievements
1	Carbon Offset Project	Increased reduction in CO2-emissions responsible for climate change by using rocket cook stoves by rural communities of Kitui County.	4,904 Households	<ul style="list-style-type: none"> • 31(18M and 13F) artisans trained from Mwingi West, Kitui East and Kitui South Sub-Counties at Kyusyani in Kitui Rural. They were equipped with relevant skills on how to construct rocket cook stoves. • Employment created for 178 Artisans on Cook stoves construction. • Reached approx 20,000 community members (with or /and without stoves) through consumer incentive mechanisms (End-User Training) and barazas. This was to create awareness to them about climate change and its mitigation measures in relation to the project and also educate them on stove maintenance. • Constructed 4,904 stoves across project implementation regions. • Reached 65 local administrators (Chief, Assistant Chief and Village administrator) and 700 village elders to sensitize them about rocket cook stoves. Village elders agreed to disseminate the same information to community members and come up the list of ready to go households. • Conducted a Kitchen Performance Test (KPT) to 50 households who were randomly selected from the beneficiaries. This forms the baseline for the next cycle of the project (2021 to 2024). • Monitoring and Usage Survey conducted to 300 households to establish the level of satisfaction to beneficiaries when using the rocket stove in relation to air quality, efficiency in firewood fuel and time saved from cooking and collecting firewood.

3. Governance and Advocacy

S/No.	Project Name	Project Overall Objective/ Goal	No. of Beneficiaries Reached	Key Achievements
1	Integrating energy into County Policy, Planning and implementation strategies	Effective integration of clean energy into County plans in Kitui county	County Government line Ministries	<ul style="list-style-type: none"> • Development and presentation of the final County Energy Plan to Kitui County Government. This involved representatives from the National Ministry of Energy and other stakeholders. • Development of an outreach and socialization plan towards fundraising and implementation of selected activities in County Energy Master Plan (This will involve meetings with CECM and speaker of County Assembly to lobby county Government to reallocate budget towards implementation of CEMP)

				<ul style="list-style-type: none"> Enhanced awareness to 374 Citizens on access to clean energy and realization of sustainable development goals through increased information dissemination on Energy access options in Kitui County through media platforms.
2	Haki Madini	Promote effective community engagement and responsible stewardship of extractive resources for inclusive growth and sustainable development	354 176M, 178F,	<ul style="list-style-type: none"> 1. Informed & organized communities actively engaging among themselves and with stakeholders on extractives to influence community interest through 4 CBOs formed and registered, currently doing proposal development to various donors. 5 Communiques expressing community views on Extractive Sector submitted (1at Regional level in South Africa,3 at National level in Kenya & 2 at County Level) 2. Enhanced awareness on the mining process and legal frameworks governing the Extractive sector leading to policy influence through Successful lobby for Gazettement of Kitui County Artisanal Mining Committee in May 2020. <ul style="list-style-type: none"> Supported development of Kitui County Mineral Investment and Utilization Policy now awaiting public participation forums. Enhanced awareness on community roles in the Extractive Sector across the 4 target Sub Counties. 3. Increased Knowledge base in Extractives Sector <ul style="list-style-type: none"> Continuous Dissemination of Published reference materials; Limestone Guide, CBO training Manual, Mining Act 2016, ASM Status Report, Climate Change Act 2016, Coal Mining Guide, Increased Bloggers publication on mining related feature articles to influence the public opinion 2 Assessment Studies on status of mining done ; a)Impact of Covid-19 and b)Mwingi north Twimuma Mining Rapid Assessment.
3	Lenten Programme	Promoting Justice and Peace	-	<ul style="list-style-type: none"> Supported the Lenten Campaign launch on 1st March 2020 at Mutomo Parish. Awareness creation through distribution of 3780 Lenten booklets Conducted one legal aid clinic at Waita Prison reaching out 316 inmates

SUCCESS STORY

Enhanced resilience for donkeys and improved livelihoods for women through pasture production and vegetable growing, a case of Wendo WA Muthumo donkey welfare group

The underperformance of the long rains (March -May, 2021) contributed largely to diminished pasture and poor browse conditions which greatly affected the body condition of donkeys and other livestock. The prolonged drought further led to increase in distances to water points in most livelihood zones as a result water sources drying up of water sources. For instance, donkey owners in Kitui south (Mathima and Mutha Wards) and Mwingi North (Ngomeni and Katse) would walk a distance of between 15-20km in search of water compared to average distance of 5-7km in normal days. The cost of water for 20litre-jerrican increased from Ksh.5-10 to Ksh.30-40. The average waiting time at water point was 6-8 hours from 2-3 hours in normal drought situation. The challenge came at a time when the donkey owners/users were recovering from the damages caused by the desert locust infestations, quelea birds' invasions and the ever-re-emerging Corona pandemic. These factors really threatened both animals' resilience and people's livelihoods, especially in Kitui South Sub-County which was the most affected by these shocks.

A case of Wendo WA Muthumo donkey welfare group located in Kamathitu village, Katse location, Mumoni ward in Mwingi North subcounty. It is composed of 22 members (4 males and 18 women) working with 47 donkeys. Formed in February 2018, it registered with department of youth, gender, and social services. The members have been engaged by Caritas Kitui on donkey welfare since then and have developed compassion and care for animals and enrolled with Mwingi North Donkey CBO, an umbrella group of 16 welfare groups with 347 members working with 749 donkeys formed as a wider network to advocate for care and protection of donkeys. Their main economic activity is Agro-farming. The group consists of women with different social status including single and divorced mothers abandoned by their husbands which increases their vulnerability. Women here struggle to make ends meet as most members rely heavily on donkeys as main source of livelihood and income for their households.

During the prolonged drought period, majority of members had their donkeys and other livestock greatly affected by the severe drought as feeding resources were exhausted and sources of livelihood were at risk of collapsing. This prompted them to open another window of exploration beyond livestock keeping. The group started a project on pasture and vegetable production for both domestic consumption and a source of income for their families. Pasture produced is Boa Rhodes while main vegetables grown include kales, tomatoes, and spinach and green grams. This was aimed at increasing resilience for their animals and improving their member's living standards to cope their drought stressed environment.

The group benefited from a piece of land donated by one of their members from where they dug a shallow well (water source) to irrigate their pasture and vegetable crops. Luckily, despite the drought, the water table along River Katse is high, which gave them a promising result. The women dug a 30 feet shallow well which provided a substantive amount of water to support agriculture. The women

started the project by drawing of water from the well using a bucket for vegetable irrigation which was tedious, time consuming and also limited the square area for irrigation.



Figure 1: Women from Muthumo Women Group draw water from a shallow Well to irrigate their Crops



Figure 2: a member from Muthumo women group quenching thirst for her donkeys drawn from a group well during along river Katse.

The plight of the women captured the attention of Caritas Kitui in partnership with Brooke EA who supported them with a solar powered pump technology which improved on the farming methodology and increased benefits to the families of Wendo WA Muthumo group.

Caritas Kitui embraced collaborations with the county department of Agriculture to support the women in designing and implementing the viable drought response intervention. Mtunze Punda Daima Project supported ward-based agricultural extension services capacity build the group members and 6 other groups on soil and water conservation technologies, pesticide and disease control and post-harvest and management. Community groups were capacity build to design and implement their projects suitable and adaptive to their environment and members encouraged to take full responsibility in decision making, coordination, and adaptation of innovations.



Figure 3: A section of Wendo wa muthumo women group receiving farm inputs (pasture seeds, watering cans, jembes) for pasture production and vegetable growing



Figure 4: A member of Wendo wa Muthumo women group irrigating a portion of their group farm using a solar powered pump donated by Brooke EA through Caritas Kitui.



Figure 5: A potable solar powered water pump donated by caritas Kitui in partnership with Brooke EA to support irrigation of vegetable growing

Wendo WA Muthumo women group has established itself as a reliable donkey welfare group is among the most and recognized group amongst other eight others which are more t focused and self-driven group determined to improve their individual member livelihoods. The group also benefitted from Pasture seeds 6kg, vegetable seeds, farm inputs (Jembes, watering cans, certified seeds (kales, spinach, Amaranths) to expand and diversify their sources of livelihood.

Caritas Kitui supported the group with 10,000litre water tank and fenced the 3 acres group vegetable farm vegetable farm which is frequented infested by livestock and rodents to prevent losses by such animals. Direct impact has been realized as empowering women through agriculture

The Wendo WA Muthumo women group became key decision makers over agricultural production and the income gained from is prioritized for seeking donkey health and their children's education. A percentage of the vegetable production is consumed at member's household level improving nutrition for their children. With the success of the crop production, the women have sufficient funds to pay school fees for their children and purchase other basic needs for their households. The group was trained on agro ecology practices, food safety and hygiene and sanitation in collaboration with the County department of agriculture and have been able to share this their behavior change efforts and skills with their families and neighbors.



Figure 6: members of Wendo wa Muthumo display tomatoes harvested from their group farm.



Figure 7: A donkey owner harvesting pasture seeds from a portion of their Group farm

The production of vegetables (tomatoes, kales and spinach) worked well for the group as it was done at time when demand was high. The group reaped maximum benefits from the project as selling prices were favorable and attractive. They generated Ksh. 37,500 between the month of (Oct-Dec 2021) the women plan to save and borrow to increase acreages for vegetable and vegetable production to meet the continual increasing demands.

The group can diversify production by including pasture production with low water requirement and yet very high value at local market •

To diversify the value chain of vegetable production, Caritas Kitui will work to link the women to local markets for supply and save on time for vegetable production and increased income for the women.

Solar technology combined with farm input support in arid and semi-arid areas is a sure way of increasing food security and help women build resilience against environmental

Shocks. When livelihood is introduced and integrated into water and sanitation activities, it increases the likelihood of adoption of good behavioral practices.

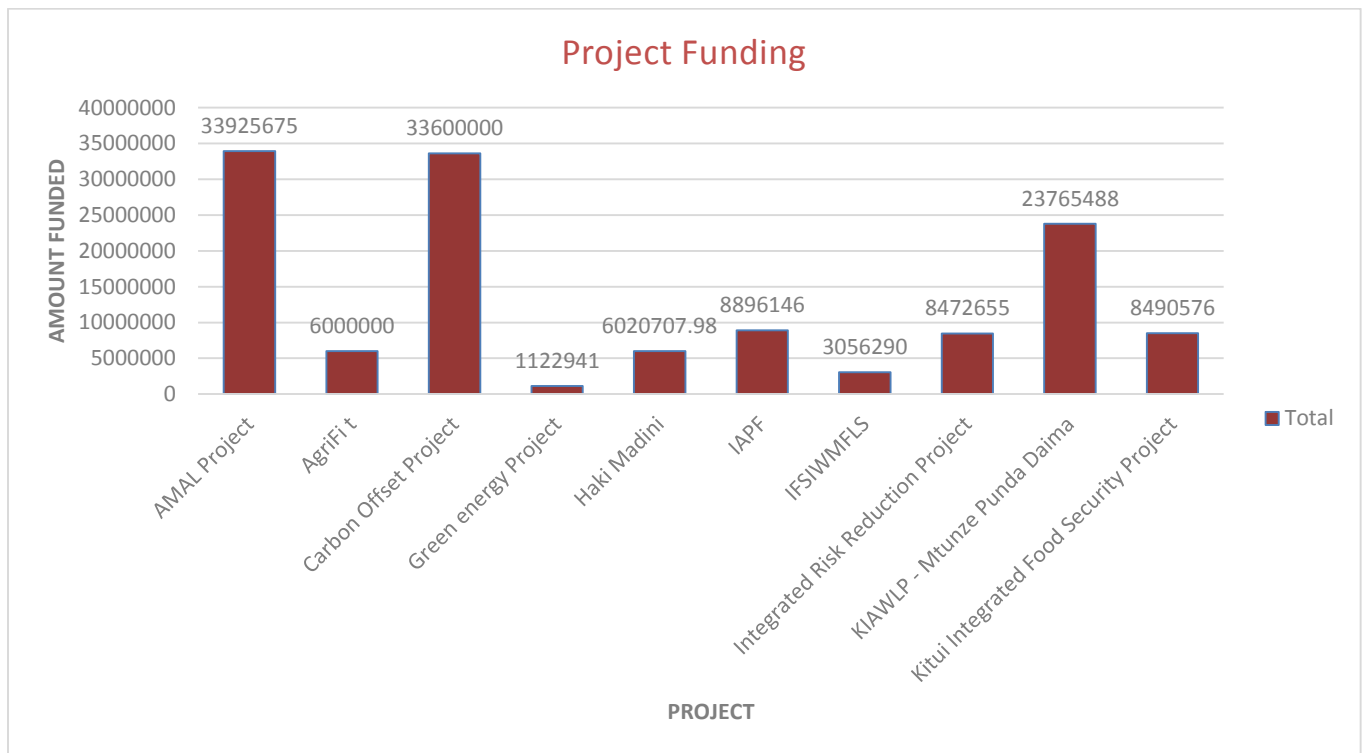
4. RM and Institutional Development

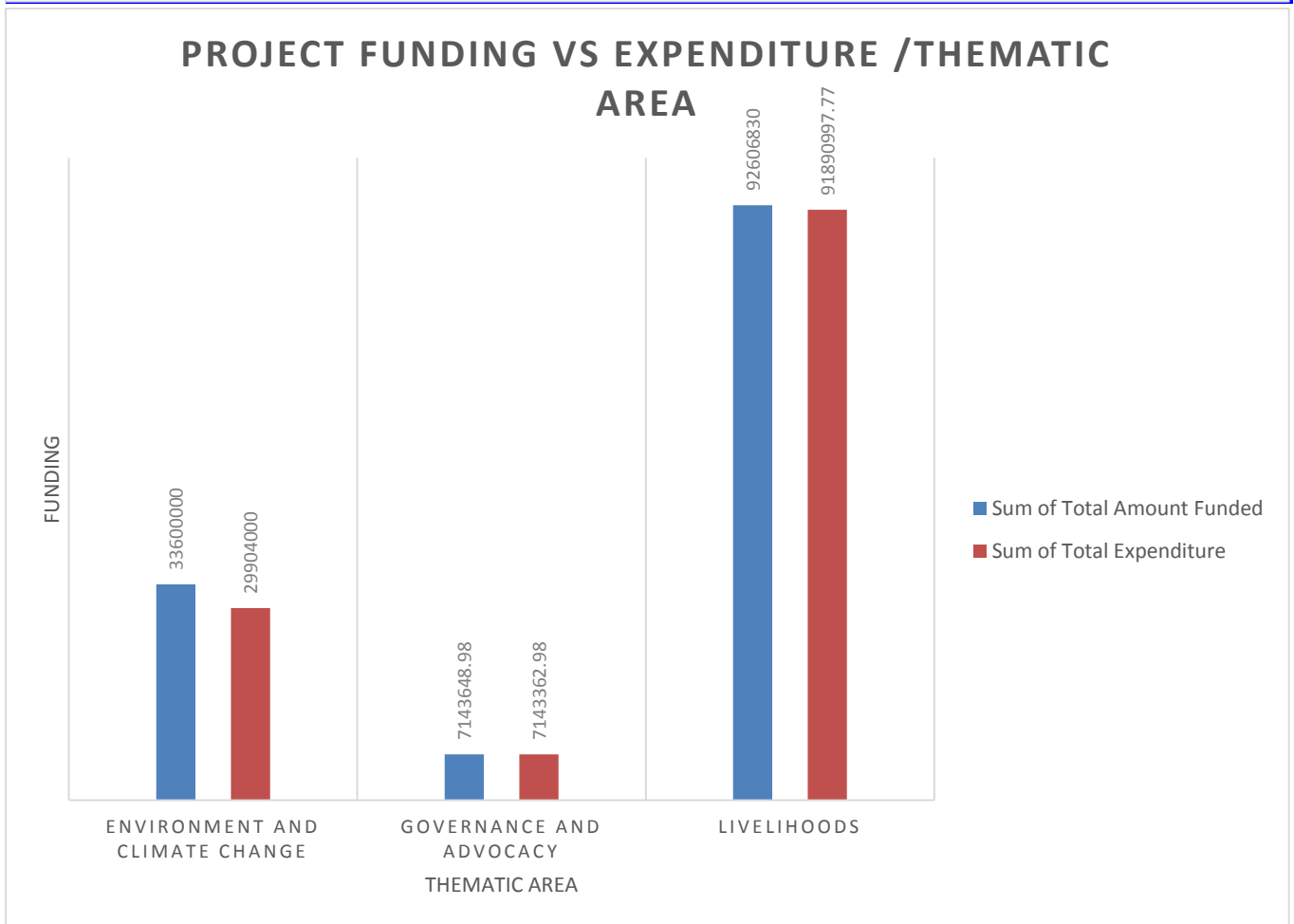
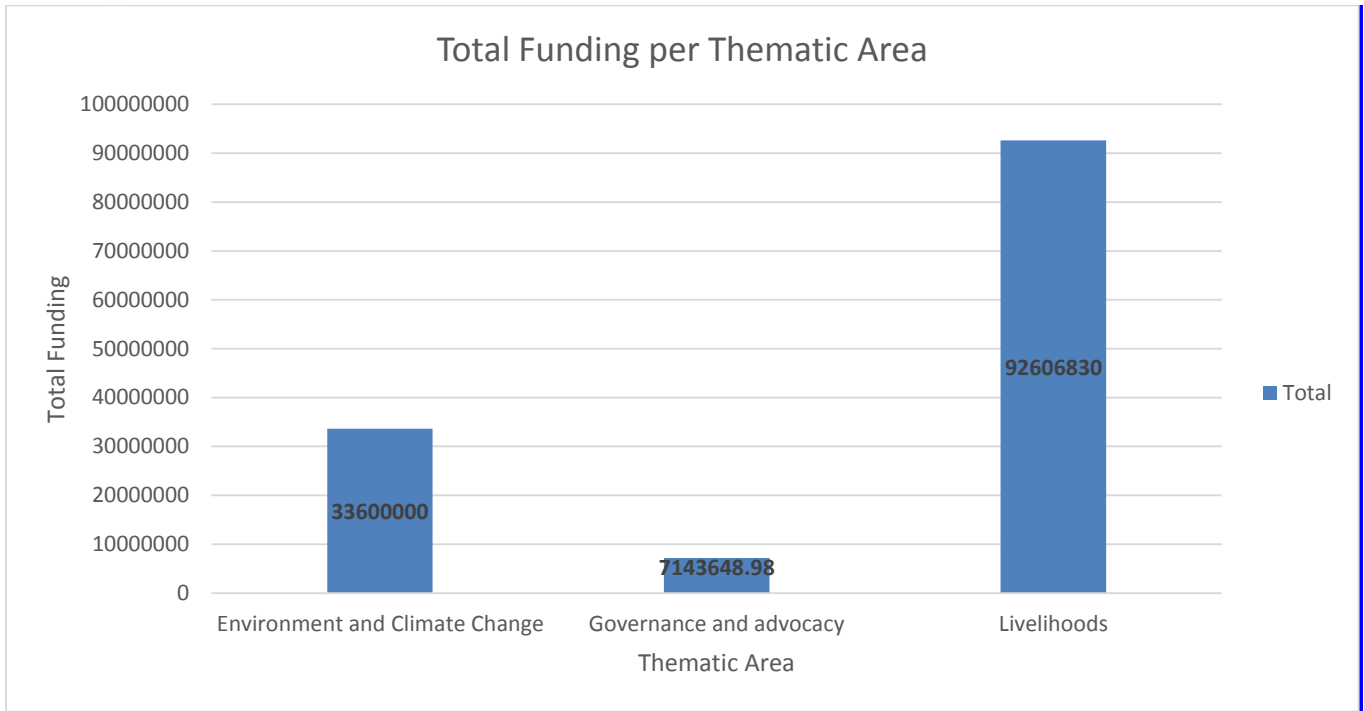
The following activities were conducted under this thematic area;

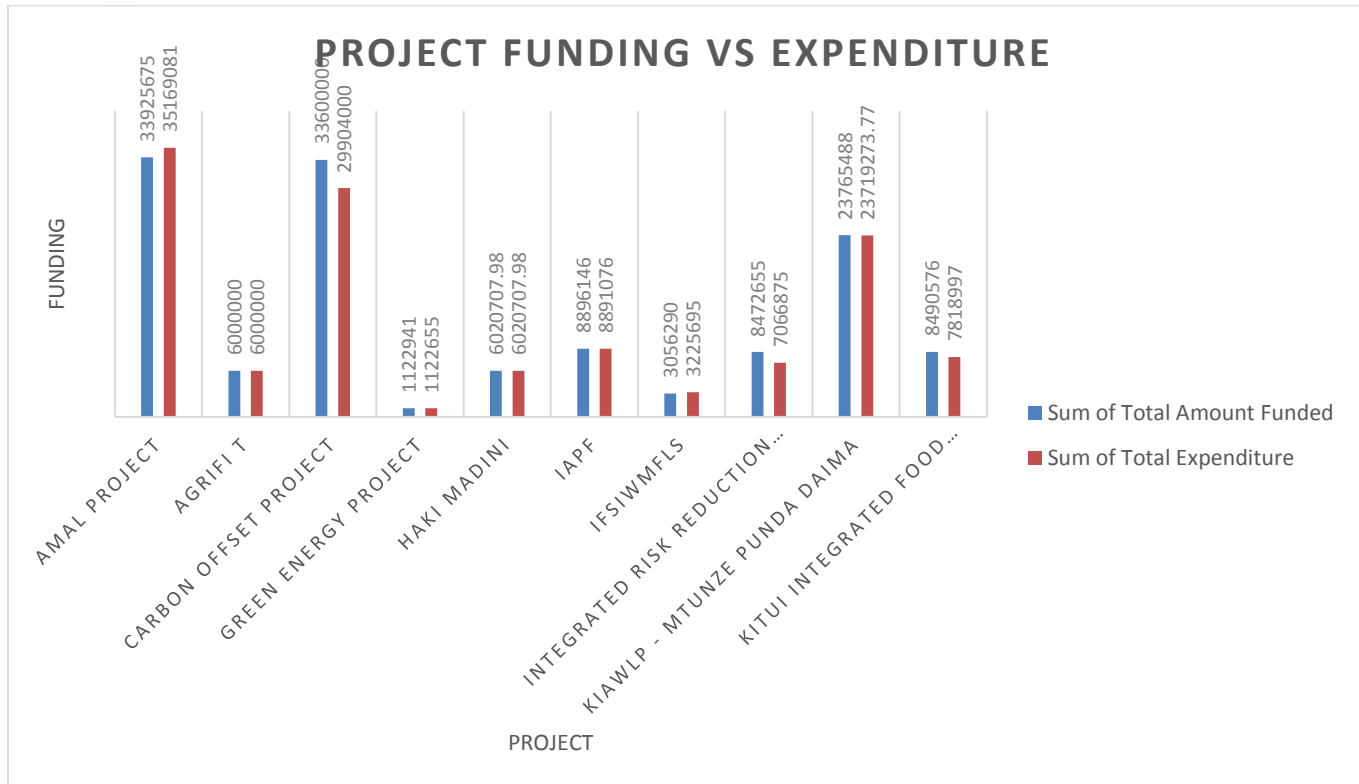
Staff Training - Caritas Partners has continuously capacity built staff on various aspects related to the project being implemented. Some of the trainings includes;

1. Caritas Kitui staff training on animal welfare and husbandry practices. 27 staff participated in the training conducted at Mwingi Summer springs on 17th to 18th Sept. 2020. Topics covered were; Animal welfare, appropriate handling and restraint of donkey for treatment, Donkey husbandry practices. The key objective for the training was to ensure that the staff embrace welfare friendly approaches in project implementation. This boosted Caritas project integration and working partnership for enhanced welfare.
2. 15 Caritas Staff trained on gender equality and social inclusion.

Financial Analysis







Challenges and Recommendations

Thematic Area	Challenges	Recommendations
Livelihoods	<ul style="list-style-type: none"> ● Impact of COVID-19: Government restrictions and directives affecting participation, plans and project implementation e.g trainings, SILC group meetings as well as its socio economic impacts 	<ul style="list-style-type: none"> ● Adaptive programming: Budget revision and adjustments of implementation plans ● There is need to have a contingency fund within our budgets to cater for uncertainties ● Policy - focus more work on implementation of existing laws and policies rather than coming up with new ones
	<ul style="list-style-type: none"> ● Climate Change Policy- slow formulation due to changes in office bearers in the MENR where the policy is domiciled 	<ul style="list-style-type: none"> ● Building of organizational relationships with new office bearers
	<ul style="list-style-type: none"> ● Delayed procurement of goods and services due to central procurement by the donor (WHH) for the partners : Caritas, ADS Pwani and PGI leading delayed implementation of some activities because the partners were not at the same level of implementation for instance us as caritas were procurement of 	<ul style="list-style-type: none"> ● Engage the donor to allow partners to procure goods and services independently whenever possible.

	<p>hardware materials for construction of poultry houses, goat pens and stores but we were to wait for the other two partners to prepare their requisitions so that WHH could initiate procurement process</p>	
	<p>Restricted participation in public and social meetings which required a certain number of participants at a given meeting (15 persons). For quality public participation at least 30-40 persons were required to participate.</p>	<ul style="list-style-type: none"> ● Donkey has a direct relationship with the 3 spheres of life (economic, social and political). Thus engagement with community and stakeholders should always emphasize on this to help the persons appreciate the value, role and position of donkeys in sustaining human livelihoods and economy. ● Structured classical recordings have a greater impact on awareness creation as compared to pre-recorded skit plays. This came as a lesson after random assessment through interaction with donkey owners which indicated that they could appreciate the educative messaging presented through systematic methods utilized by classical records vis a vee play presentation in skit plays. This has helped project to advance awareness creation on priority animal husbandry practices on especially, hard to change behaviors and practices.
	<ul style="list-style-type: none"> ● Poor markets for farmers produce - Farmers continued to experience exploitation from traders who capitalized on their urgent household needs to buy farmers produce at very low prices. 	<ul style="list-style-type: none"> ● Encourage collective aggregation and marketing
	<ul style="list-style-type: none"> ● Low production of the cowpeas and sorghum technologies/crops across the areas of project implementation as the crop was purely dependant on rain fed agriculture ● Negative attitude towards sorghum and cowpeas value chain farming. 	<ul style="list-style-type: none"> ● Target potential areas with sustainable water supply to supplement incase of rain failure ● Continuous awareness to farmers through exchange visits that will allow the farmers to have exposure to other areas and learn more as the project implementation is concerned.

	<ul style="list-style-type: none"> • Budget cuts by the donor due to fundraising Challenges caused by the pandemic (From £60,000 to £35,000) • Delay in disbursement of funds by the donor (CAFOD) for two and a half months. 	<ul style="list-style-type: none"> • Budget revision scaling down activities and doing away with some budget lines which could not affect the overall objective of the project • Revision of activity plans by rescheduling affected activities to fit into the project financial year.
<p>Governance and advocacy</p>	<ul style="list-style-type: none"> • Occasional postponement of Activities planned following government ban on international travel which limited partners travel to participate in the county energy master plan. • Slow planning and organizing of activities by the County Government (Ministry of Environment) caused by the reshuffling of key ministry staff members. This has led to slow implementation of activities towards development of County Energy Plan 	<ul style="list-style-type: none"> • Enhanced coordination, collaboration and consultation through use of various platforms i.e technology, to maintain continued collaboration with all the partners towards finalization and validation of County Policy documents

Caritas Kitui 2020 Partners

- *Current logos of Caritas Kitui partners and donors for 2020.*





Walking in unity as brothers and sisters



**AgriFI Kenya Climate Smart
Agricultural Productivity Project**
Integrating Farmers in Community Markets

