



2021 CARITAS-KITUI ANNUAL REPORT

CATHOLIC DIOCESE OF KITUI.

Vision:

A Sustainable community

Inspired by the Love of God

Mission:

*Enhance integral human development
through partnerships and innovations to
achieve a sustainable community*

+254 95427123

P.O Box 300 – 90200

Off County Referral Hospital Road, Kitui.

Email:

info@caritaskitui.org

Facebook:

www.facebook.com/www.caritaskitui.org

Twitter: @Caritas Kitui.

Website:

www.caritaskitui.org

Innovation Transformation Sustenance

Foreword

Rt. Rev. Joseph Mwongela, Chairman Board of Directors, Caritas Kitui

Foreword

Rt. Rev. Joseph Mwongela, Chairman Board of Directors, Caritas Kitui

1. *Passport Photo*
2. *Note*

Preface

Ms. Florence Ndeti Director, Caritas Kitui

1. *Passport Photo*
2. *Note*

About Caritas Kitui

Introduction and Caritas Kitui Background.

Vision: *A sustainable community inspired by the Love of God.*

Mission: *Enhance integral human development through partnerships and innovations to achieve a sustainable community.*

Organization Summary:

Caritas Kitui is the Development Department of the Catholic Diocese of Kitui. Caritas is a Latin word that means Works of Charity/Mercy. The Department was established in 1974 under Community Education whose focus was on Humanitarian Assistance and Establishment of structures for social development. In 1977, the Department became a fully-fledged development department and was consequently renamed as Caritas Kitui in 2010.

Geographical Coverage:

Caritas Kitui works in Kitui and 3 sub counties of Makueni County reaching approximately 240,000 beneficiaries in its various Programmes.

Core Competencies

Caritas Kitui is mandate is, guided by its 2018- 2022 Strategic Plan <https://caritaskitui.org/strategic-plan/>.

Caritas Kitui programmatic areas are:

1. Sustainable Livelihoods
2. Humanitarian and Disaster response
3. Environment and Climate Change.
4. Governance and Advocacy
5. Institutional Development

Approaches used;

1. Ecosystem Based Adaptation (Agro-ecology, Regenerative Agriculture and Integrated Watershed Management)
3. Human Right based approach.
4. Gender responsive approach
5. Community Managed Disaster Risk Reduction (CMDRR)
6. Community Based Targeting (CBT) and Asset Based Community Development
7. Value Chain Development approach (VCD)
8. Media approach
9. Social inclusion approach.

Innovation Transformation Sustenance

Unique Capabilities/Differentiators

- Clear Organizational Structure with a functional board and a Strategic Plan with defined objectives
- Credibility and Good reputation/trust by our partners and stakeholders including local community
- Organization systems, policies and controls that ensure competence in management of diverse partner grants
- Skilled and experienced Staff that increases donor confidence in the organization.
- Track record in implementation of projects and programs in the five thematic areas
- Wide Catholic Church networks and partnerships locally, regionally and internationally

Past Performance

- Protracted Relief and Recovery project funded by WFP: 20 Years partnership in Livelihoods through environmental conservation and integrated agricultural technologies
- Integrated WASH and Agriculture Project funded by Catholic Relief Services (CRS): 10 years partnership in integrated WASH Activities
- CRA (Climate Resilience Agriculture funded by UKAID Through CAFOD 3 years partnership in integrated Livelihood's activities
- Agricultural and Market and Access Linkages Project (AMAL) funded by Welthunger Hilfe 3 years Project in integrated Livelihood's activities through community-based land and environmental conservation technologies.

Key Personnel Experience:

Caritas Kitui staff is competitively recruited to suit specific skill set some of which are:-

- *Community Development*
- *Agronomy and Environmental conservation and Protection*
- *Natural Resources Management*
- *Livestock management and Veterinary*
- *Gender and social inclusion*
- *Safeguarding and protection*
- *Project cycle manage*

Organization Data

For more information about Caritas Kitui visit finds us in:

Physical Location: St. Augustine Secretariat off Kitui County Referral Hosp Road,

Physical Address: 300 - 90200

Phone Contact: +254 020 2408351

Email: info@caritaskitui.org

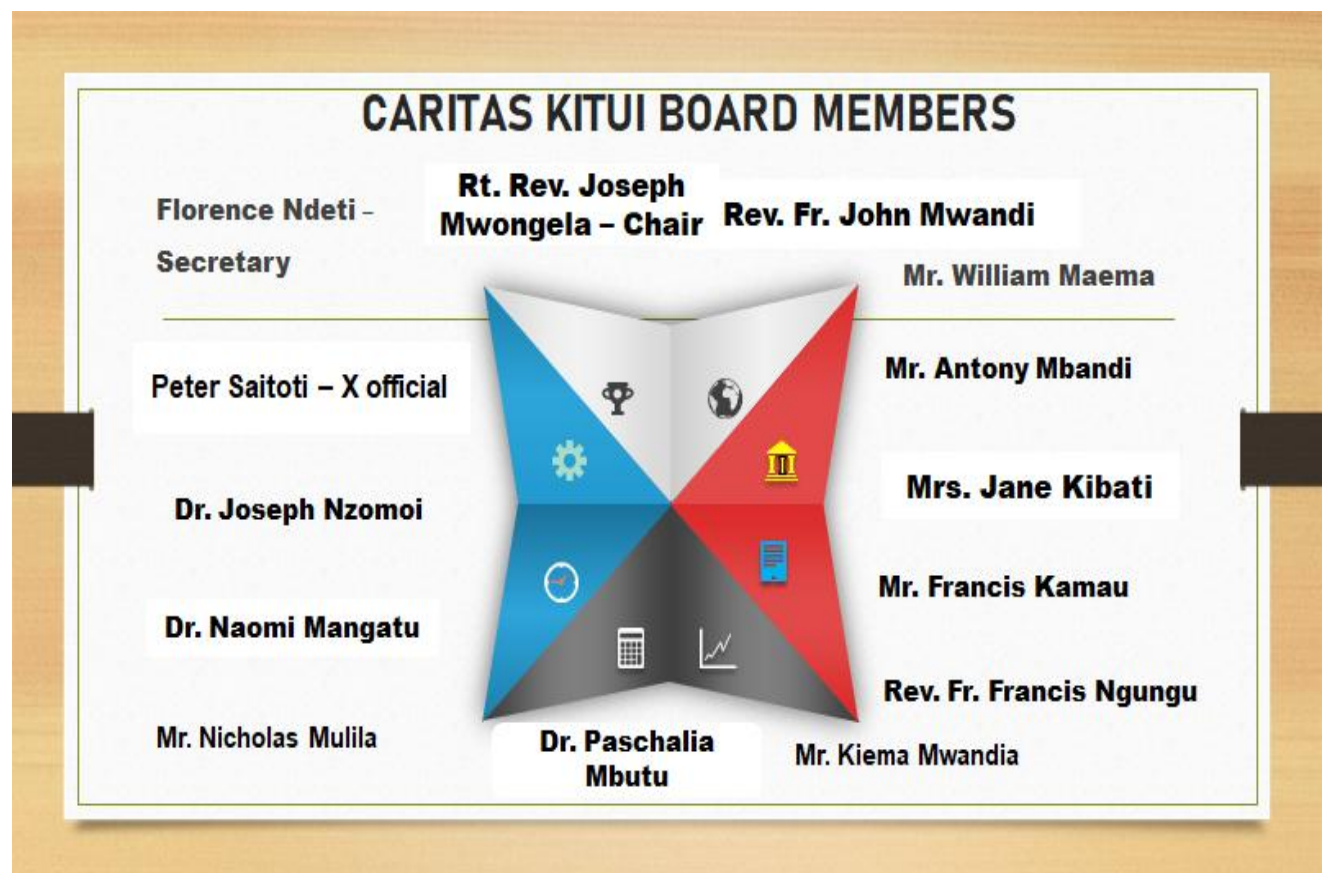
Website: www.caritaskitui.org

Twitter: @Caritas Kitui

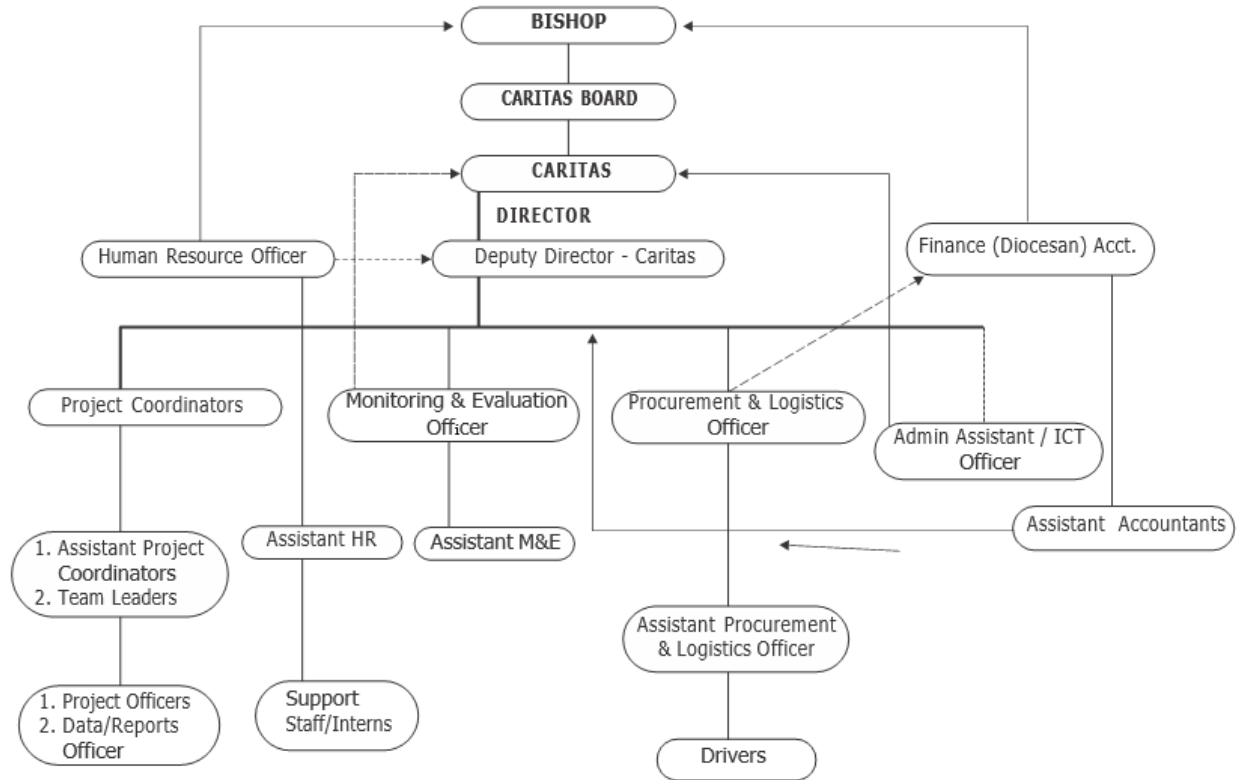
Facebook: Caritas Kitui

Caritas Kitui Structure, Governance and Management

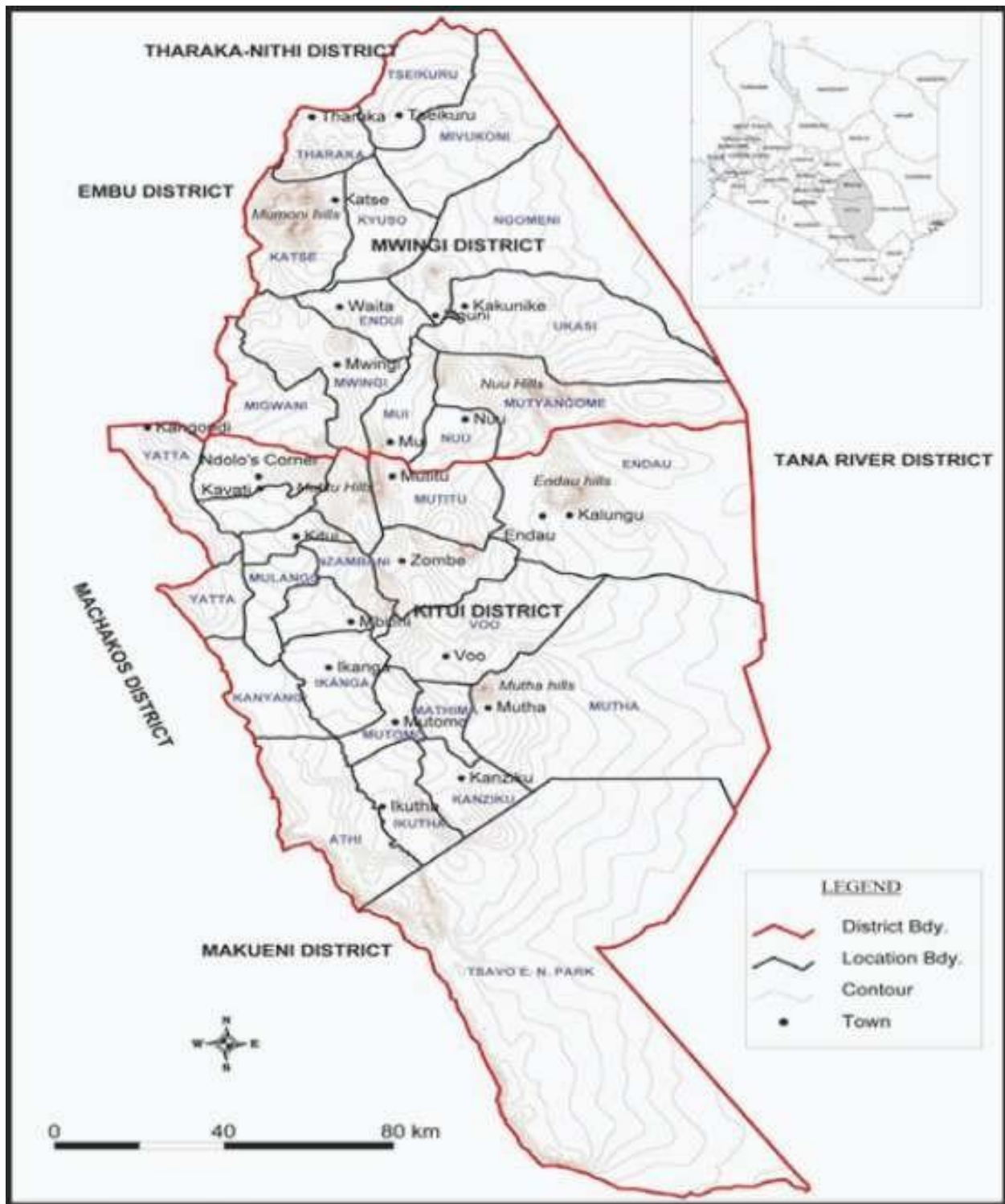
The Caritas Kitui Board



THE CARITAS ORGANOGRAM



Areas of Operation



Caritas Kitui Work at Glance

Caritas Kitui implemented 11 projects in both Kitui and Makueni Counties. Implementation of these projects was guided by the 2018 – 2022 strategic plan.

These projects were implemented under the five thematic areas of Caritas Kitui. The following tables show the number of beneficiaries reached per thematic area and the specific geographical locations of the projects' coverage.

1. Sustainable livelihoods

Caritas Kitui had 6 projects under sustainable livelihoods in the year 2021. Sustainable Livelihoods Projects are interventions to protect and support the means of living and survival by the local community. The projects covered both Kitui and Makueni Counties. A total of **89,060 beneficiaries** were reached under sustainable livelihoods in the year 2020 by the projects below.

S/No.	Project Title	Objective	Sub county	Wards
1)	Integrated food security and improved water management for livelihoods	To develop community based systems to enhance food security, environment and livelihoods including entrepreneurship	Mwingi central	Nuu
2)	Strengthening market linkages for improved food and nutrition security of agro pastoralist households in Kitui and Makueni Counties (AMAL Project)	Improved Food and Nutrition security for agro pastoralist HHs in Kitui and Makueni counties.	Kitui Rural and Kitui South in Kitui county and Kibwezi East, Kibwezi West and Makueni Sub counties in Makueni County.	Kyangi, Ikutha and Athi wards in Kitui county and Ivingoni/Nzambani, Masongaleni, Mtito/Andei, Makindu, Nguumo, Kathonzweni wards in Makueni county.
3)	Kitui Integrated Animal Welfare and Livelihoods Project	The project aims to ensure improved welfare of working Donkeys and Mules in Kitui County by ensuring that the animals are free from suffering now and in the future.	Mwingi North Mwingi Central Mwingi West Kitui West Kitui South	Ngomeni Tseikuru Kyuso Mumoni Waita Nuu Nguni

				Kivou Mwingi Central Mui Kiomo/Kyethani Kyome/Thaana Nguutani Mingwani Kauwi Mutonguni Kithumula kwa Mutonga ward Matinyani Ikanga Kyatune Mutomo/Kibwea Kanziko Mutha Athi Ikutha
4)	Kitui Integrated Food Security Project II	To improved access to food and income for 600 HHs in Nguutani and Mutonguni wards through good agricultural practices and diversification of livelihoods	Mwingi West Kitui West	Nguutani Mutonguni
5)	Community Resilience Building and Sustainable Natural Resource Management in Kitui County	Vulnerable communities living in arid and semi-arid lands are resilient and benefit from sustainable use and management of natural resources	Mwingi Central Mwingi North	Nguni Ngomeni
6)	AgriFi Kenya Climate Smart Agricultural Productivity Project	Climate change adapted and market integrated smallholder agriculture aiming to reduce the national food deficit and improve agriculture sector competitiveness strengthened	Mwingi North, Mwingi West, Kibwezi West and Kibwezi east	Mwingi North, Mwingi West, Kibwezi West and Kibwezi east Wards

2. Environment & Climate Change

Through this program Caritas Kitui undertakes efforts that promote environmental protection, mitigation and response to climate change. Caritas Kitui reached a total of **17,235 beneficiaries** under environment and climate change through the following project;

S/No.	Project Title	Objective	Sub county	Wards
1)	Carbon Offset Project	Increased reduction in CO2-emissions responsible for climate change by using rocket cook stoves by rural communities of Kitui County	Kitui Central, Rural, West, Kitui East, South and Mwingi West sub-counties.	All wards in Kitui Central, Rural and West. 2 wards in Mwingi West (Migwani and Kyome/Thaana), 3 wards in Kitui South (Ikanga, Mutomo and Athi) and 2 wards in Kitui East (Mutitu/Kaliku and Zombe/Mwitika).

3. Governance and Advocacy

This program seeks to strengthen the voice of communities; especially the most vulnerable so that they are able to articulate their needs, defend and safeguard their rights. A total of **6,800 beneficiaries** were reached under governance and advocacy in the year 2021 by the projects below.

S/No.	Project Title	Objective	Sub county	Wards
1)	Improving Strategy and Uptake of Clean Cooking Project	To test Energy Delivery Model ideas and solutions that can help households to transition to cleaner cooking devices	Mwingi Central , Kitui Rural and Kitui South	All wards in the three Sub Counties
2)	UK PACT - Energy Enabling green Development	To test Energy Delivery Model ideas and solutions that can help households to transition to	Kitui Central , Kitui South , Mwingi Central , Kitui East	All wards in the four sub counties

		cleaner cooking devices		
--	--	-------------------------	--	--

4. Humanitarian and emergency Response

Caritas Kitui through her Partners offers material and logistic assistance to vulnerable people to save lives, alleviate suffering and maintain human dignity during and after disasters caused by natural hazards or man-made, as well as empower communities to prevent and strengthen preparedness for when such situations occur. A total of **3,256 beneficiaries** were reached through the following projects in the year 2021 to realize the above course.

S/No.	Project Title	Objective	Sub county	Wards
1.	Desert locust livelihoods recovery	Increase the resilience of livelihoods to threats and crises	Entire Kitui county	(20) wards
2.	Logistics to support to register beneficiaries and support trainings of the registered beneficiaries	To contribute to the attainment of disbursement cash transfer to cushion the target communities against panic, sale of livestock at exploitive prices	Mwingi north	(1) Kyuso

Key Programme Achievements and Impact

1. Live hoods

S/No.	Project Name	Project Overall Objective/ Goal	No. of Beneficiaries Reached	Key Achievements
1.	Strengthening market linkages for improved food and nutrition security of	Improved Food and Nutrition security for agro pastoralist	Direct Target Beneficiaries: 1900 Households (1540 Women & 360 Men)	1. 15 Farmer Organizations (FOs) were linked to structured as well as unstructured markets to sell their produce: DigiFarm, KARI, Cereal wholesale traders, cereal dealers: Kilimo Bora, Kiboko and Nzambani FOs sold green grams and sorghum. The aggregate total was 84.372 MT. The produce comprised of green grams,

	agropastoralist households in Kitui and Makueni Counties (AMAL Project)	HHs in Kitui and Makueni counties.		<p>cowpeas and sorghum. The surplus aggregated produce was valued at Ksh 6,210,075/=.</p> <ol style="list-style-type: none"> High adoption of improved poultry rearing at household and at group level for income generation and nutrition purposes: Bidii, Ikaasu, Mutonya M2M groups have started commercial poultry rearing and are selling to East Meat- 14 of 21 M2M groups have reliable source of water and are doing small scale irrigation. 1500 (78%) of 1900 target beneficiaries adopted vegetable growing technologies which has increased productivity and improved nutrition through the knowledge gained: Grow bags, sunken beds, kitchen gardens, vertical bags Increased culture of savings and loaning approaches through VSLAs. Through this practice, members of Farmer groups have access to money to acquire farm inputs (e.g. seeds, pesticides), paid school fees and other levies, etc. Kathonzweni EGT, Kasambani and Nzambani FOs bought seeds, pesticides in bulk and redistributed to members.
2.	Kitui Integrated Animal Welfare and Livelihoods Project (KIAWLP) - Mtunze Punda Daima	Reduced suffering for working donkeys and mules in Kitui county through enhanced welfare for the animals	During the 2021/2022 financial year a total of 10,234 (1,684M/8,550F) donkey owners/users have been reached	<ul style="list-style-type: none"> Full achievement on annual target for donkeys and Owners: The target reach for year represents 112% (10,234 out of 9,125) achievement on donkey's owners and 116% (21,246 out of 18,250) on the donkeys reach for the FY Improved welfare of working donkeys - general welfare of donkeys from end term assessment improved from 72.1% to 85%, based on the End Term assessment. Animal Health and Welfare Quality Assurance Tools adopted by County Vets. That is Animal Health Mentoring Framework (AHMF) and Agro-Vet Mentoring Framework (AMF). 10 SCVOs and 5 Senior Veterinary Officers to be TOT on animal health quality. Mentoring 73 Animal health practitioners. Water tracking and bulking for drought response in highly stricken areas; Caritas Kitui designed a model for water tracking which embraced water bulking as a start-up capital for groups in very affected areas. This included Mutha, Mathima, Mutomo and Ikutha. The initiative enhanced drought coping mechanisms for an average of 600 beneficiaries working 1,200 donkeys. Improved income and financial services among women donkey owners – this has been boosted by the Savings and internal lending communities (SILC) model that has been introduced by the Caritas Mtunze Punda Project. 30 donkey welfare groups have been capacity built and successfully adopted the model. Each group saves an average of 100,000 indicating a total of 3,000,000 in circulation. This has made it easy for groups to hold donkey clinics and access medical

				<p>treatment for donkeys after every 3 months. A total of 847 donkey owners/users working with 1,743 donkeys are benefiting from this initiative</p> <ul style="list-style-type: none"> ● Increased awareness on animal welfare through Media : A total of 3.8M listenership (Kitui, Machakos and Makueni) is reached through the FY; as per the County FM, Mutongoi TV and Thome FM listenership reports. From a live coverage report on facebook (Real Time Facebook), the reach was as follows: Mutongoi TV was 3,000, County FM 1,800 and Thome FM 950 giving a total of 5,750 persons.
3	Integrated food security and improved water management for livelihoods	Increased access to clean and adequate water for human consumption ,livestock and agricultural productivity including entrepreneur ship to 1500 households in Nuu ward	1500	<ol style="list-style-type: none"> 1. 5 plastic water tanks of 10m3 (10,000 liters capacity) procured and installed in 5 schools with construction of tank bases and guttering system. 2. A total population of 1,036 (F 480, M556) school going children, teachers and support staff in the five targeted schools have increased access to clean water from the tanks after the anticipated OND short rains. 3. 37 members of (BOM) Board of Managers (M 17, F 20) in 5 schools equipped with general knowledge on operations and maintenance of the water facilities with close bias to maintenance of the tanks and hygiene and sanitation practices. 4. Community members from 4 project areas (Mwalili, Ngwasini,Kathanze and Kimonyongo) sensitized on good hygiene practices which was aimed at equipping the community members with knowledge on how to adopt the practices to minimize water related diseases while handling water at source,during transportation , and at household level including water treatment 5. 2 SILC groups of 27 Members (F 19 M 8) established and trained on SILC model and methodology. The members have adopted the saving culture, individual members saving raring from Ksh.100 – 500 monthly. Their cumulative saving stands at Ksh.36, 900 currently serving as revolving funds to the group, hence benefiting individual households economically and improving the livelihoods of the community members 6. 3 SILC groups were issued with small grants of Ksh. 20,000 each to boost and top up their loaning kitty, hence increasing capacity to borrow a substantial amount of money per person. Cumulatively, the 3 SILC groups have a total of Ksh. 381,790 net worth realized by the end of August 2021 7. 2 groups for interlocking blocks consisting of 41 members (f 30, M 11) formed, trained and have adopted the technology of fabricating the interlocking blocks 8. A total of 10,097 blocks have been made and 3500 pieces of them sold at a cost of Kes. 25 each giving a total amount of

				<p>Kes. 78,500 income, the income was used by the group members to purchase 12 goats for members to boost their livelihoods</p> <p>9. 5 local artisans (all men) acquired skills on construction using interlocking blocks, it is anticipated that these skills will improve the quality of structural works in the community and institutions by use of new building technology with the use of the interlocking blocks.</p> <p>10. 30 selected farmers were exposed to agro – ecology and permaculture technology during the visit to existing groups' demo farms</p>
4	Kitui Integrated Food Security Project II	To improved access to food and income for 600 HHs in Nguutani and Mutonguni wards through good agricultural practices and diversification of livelihoods	600HHs 495 Adults (357F, 138 M), 50 Youth (36F, 14M), 30 elderly (18F, 12M), 15 PWDs (11F, 4M) and 10 PLWHIV (10F)	<ul style="list-style-type: none"> ● Increase in crop yields from an average of 2 bags at baseline to 3-4 bags per acre currently- Adoption of modern dryland farming skills/technologies ● Increase in levels of household income from average of KES 4,705 (at baseline) a month to average monthly household income of KES 6,373 currently-sale of surplus farm produce and returns from small businesses initiated from SILC loans ● Improvement in savings and access to credit among beneficiaries through local saving and lending schemes-14 SILC groups operational with a total loan fund of KES 602,400 in 6 months ● Diversification of livelihoods through small scale vegetable production, fruit farming and small/petty businesses. This is attributed to access to income from sale of crops and livestock products and credit from loaning scheme
5	Integrated Risk Reduction Project	To contribute towards securing the livelihoods of the people in the Diocese of Kitui	1501 beneficiaries 1373F , 128M	<ol style="list-style-type: none"> 1. Water needs assessment done for Kyome/Thaana ward and the report shared with MISEREOR. 2. Agro-ecology Knowledge and skill transfer to 28 farmers and 7 project staff has resulted to increased adoption and practice of agro-ecological practices and improved production 3. Farmers have improved savings and lending culture in communities (SILC) with Kanini Kaseo self help group managed to purchase a piece plot. Tikwenda kwitu group in kavaini had managed to accumulate KSH 217,095 as of October 2021 4. Trained 2 communities in (Thokoa and Winzyeei location) on community managed disaster risk reduction and supported to establish 2 committees. 5. Increased household asset base as a result of poultry farming – Angeline Kivite from Yenzuva attests to this having bought a 2000 liter water tank from proceeds of chicken sales.

6	Community Resilience Building and Sustainable Natural Resource Management in Kitui County	Vulnerable communities living in arid and semi-arid lands are resilient and benefit from sustainable use and management of natural resources	2530 (1925F, 605M) Inclusive of: 50PLWD, 22 PLW HIV,76 El derly and 32 Chronically ill	<ul style="list-style-type: none"> Increased adoption of agroecology practices by 2530 farmers. Formation of 2 Community Based Organizations at Nguni nad Ngomeni wards to advance community agendas through advocacy and collective marketing.
	AgriFi Kenya Climate Smart Agricultural Productivity Project	Climate change adapted and market integrated smallholder agriculture aiming to reduce the national food deficit and improve agriculture sector competitiveness strengthened	4000 (1246M and 2754F) direct farmers 21960 indirect farmers	<ul style="list-style-type: none"> Cumulatively a total of 4,000 direct farmers (3242 F, 758M) were reached through; 1,964 tones of cowpeas technologies and 1,627 tones of sorghum technologies, good agronomic practices and farmers field day in promoting cowpeas value addition and usage. 1112.5 acres are under cowpeas production as at March 2021 (1107.5 acres from 2215 (923M & 1292F) farmers and 5 acres from 20 demo plots) 606 people/farmers have been employed along the sorghum value chain.(25 input suppliers,10 service providers trainers,15 transporters-farm manure, 556 casual workers and farmers) Seven jobs have been created: Casual laborers- land preparation/demo plots preparation, weeding, planting and spraying of chemicals, Agro dealers in acquisition of farm inputs, Extension officers-provision of agricultural advisory services. Transporters - transporting farm manure and other farm inputs/outputs, Salesmen/Women-Played a role in accessing the market for sorghum value chain, Farmers-Planting, weeding, post harvesting, land and storage facility provision, Multipliers- Able to provide sorghum seeds and produce for planting and even during farmer field day for value addition.

Humanitarian and emergency response

1	Desert locust livelihoods recovery	Increase the resilience of livelihoods to threats and	872 Male and 1384 Female	<ul style="list-style-type: none"> Increased awareness on Desert Locust surveillance and control conducted to the 2,266 affected communities Increased post-harvest management by 2,266 communities as they were aware on how to chase away and control the
---	------------------------------------	---	--------------------------	---

		crises		<p>damage.</p> <ul style="list-style-type: none"> Increased awareness on COVID-19 through dissemination of WHO and ministry of health guidelines to 2,266 communities across the County. 4.1 tonnes of maize, 3.6 of cowpeas, 17 kilograms of kales, 2.8 tonnes of fertilizer, 3.6 tonnes of sorghum, 39 kilograms of tomatoes and 38 kilograms of Swiss chard distributed to 2,266 farmers. 2,000 hermetic bags and 1,400 vertical garden bags were distributed to 680 farmers.
2	Logistics to support to register beneficiaries and support training of the registered beneficiaries	To contribute to attainment of disbursement of cash transfer to cushion the target communities against panic, sales of livestock at an exploitive prices	1,000	<ol style="list-style-type: none"> 1CSG conducted to share the project information 42 (32m and 10f) cash transfer committee formed 6 target areas identified and targeting of beneficiaries conducted. 1,000(176m and 824f) beneficiaries identified for cash transfer and physical verification done in the six target villages 1,300 beneficiaries acquired knowledge on early warning information appropriate nutrition, livestock production practices and social dynamics. 975 beneficiaries received Ksh. 5,500 each.

Environment and Climate Change

1	Carbon Offset Project	Increased reduction in CO2-emissions responsible for climate change by using rocket cook stoves by rural communities	3447 Households	<ol style="list-style-type: none"> Reached approximately 30,000 community members (with or /and without stoves) through consumer incentive mechanisms (End-User Training) and barazas. This was to create awareness to them about climate change and its mitigation measures in relation to the project and also educate them on stove maintenance. Constructed 3447 stoves across our project implementation regions. Reached 93 local administrators (Chief, Assistant Chief and Village administrator) and 915 village elders to sensitize them about rocket cook stoves. Village elders agreed to
---	-----------------------	--	-----------------	--

		of Kitui County.		<p>disseminate the same information to community members and come up the list of ready to go households.</p> <ol style="list-style-type: none"> 4. Conducted a Kitchen Performance Test (KPT) to 50 households who were randomly selected from the beneficiaries. This forms the baseline for the next cycle of the project (2021 to 2024). 5. Carried out Monitoring and Usage Survey to 315 households to establish the level of satisfaction to beneficiaries when using the rocket stove in relation to air quality, efficiency in firewood fuel and time saved from cooking and collecting firewood.
--	--	------------------	--	---

Governance and Advocacy

1	Improving Strategy and Uptake of Clean Cooking Project	To test Energy Delivery Model ideas and solutions that can help households to transition to cleaner cooking devices	840	<p>Development of a survey report on Clean cooking Solutions in Kitui County.</p> <p>150 Households supported with clean cooking stoves i.e. LPG, Electric pressure cookers and JIKO KOA.</p>
2	Enabling Energy Green Development	To design productive use of energy initiatives such as solar-powered irrigation for agriculture and solar-powered incubators for poultry	860	<ul style="list-style-type: none"> • Capacity needs assessment report developed for the county government officials on Gender Mainstreaming , Monitoring and Evaluation • Analysis report developed on opportunities within Kitui County Government Planning Processes.

SUCCESS STORY

PROJECT NAME: KEN 1170 – AMAL 2021

MAKUENI COUNTY – CASE STUDY: ITUMBULE M2M

Background information

Itumbule Mother to Mother Group was formed in 2019 as a women group with crop farming and nutrition diversity practices as the main objectives. The group has 50 members of whom all are women. Among this number there are 32 female youths. The group is found in Itumbule village, Kathonzweni ward, Makueni Sub County in Makueni County.

The group has a vision to improve members' food security and financial stability and a mission to realize empowered women in the mainstream of agricultural production and nutrition security to the group members and the surrounding community.

The following are major objectives for the group:

1. To increase the production of green grams and sorghum for each member of the group
2. To realize collective marketing of farm produce for the group members
3. To promote agro nutrition practices among the group members
4. To realize financial security for the group members

Group activities

- 1) Farming as a business; -
 - Vegetable growing – kitchen gardening
 - Fruit trees growing
 - Agro ecology
 - Livestock production
- 2) Health and nutrition programmer

The group has a resource mobilization strategy to finance the above activities that incorporates;

- Seeking loans from micro finance
- Donations from well-wishers
- Grants from development partners
- Members' own contribution
- Proceeds from commercial farming

Future plans

- Micro finance – escalation from the VSLA
- Commercial vegetable growing
- Commercial fruit production

The group was targeted by Caritas Kitui through the AMAL project which is supported by Welthungerhilfe as one of the groups to be supported by the project. The group members were from different self-help groups who merged to form one group in order to increase their agricultural production and promote nutritional practices at group level as well as at the individual households.

Since the group was targeted in June 2019, it has been engaged on different capacity building sessions that are geared towards realizing food and nutrition security. Practical based approaches were used during the training sessions; these practical sessions were carried out in the demo plots established by the group.

Changes after being enrolled

Accessibility to nutritious foods

Through the AMAL project, there has been an increase in access to nutritious foods among the group members. The group has set up kitchen gardens at the group's demo farm whereby the technology has been cascaded and adopted at the households. The group has embraced different kitchen technologies, sunken beds and multistorey gardens being the most adapted technologies by the members.

Previously the group members lacked adequate skills on development and maintenance of their vegetable gardens. Through capacity building sessions conducted by the Makueni sub county nutritionist and the ministry of agriculture, members have gained skills on multistorey gardens whereby over 85% of the members have installed the vertical bags in their households.

Christine Muendo used to depend solely on buying highly nutritive vegetables to feed her family from the market, after being enrolled in project she set aside 1/8 of an acre to establish a kitchen garden. She has planted amaranth, kales, spinach and coriander. She sells the surplus to her neighbors and she earns 1600/= in week.

The groups demo farms have been equipped with grow bags, the grow bags have been instrumental in increasing the quantities of vegetables from the demo farms, this can be attributed to the fact that the vegetables from one grow bag are equivalent to 1/8 of an acre. These vegetables being sold to group members and the community which generates income for the group.

The group has 21 members with children under 5 years. The women are incorporating these vegetables being grown in the household kitchen gardens in their diets. In addition, the nutrition training sessions that have been held have had a direct and significant benefit to these children. The mothers have managed to identify the most nutritious foods for these children and the best ways to prepare and utilize them while maintaining and preserving their nutritive value for the benefit of the children.

Peninah Munyasya who is the chairlady of the group and the local CHV has supported Margaret Ndinda's 3-year-old son to access the foods with nutrient value. Margaret Ndinda said that her son experienced dry skin and complained of eye problems which was as a result of deficiency in vitamin A. *"My son Mwanthi used to have dry skin and complained of eye problems, I did not know the cause of this, Peninah told me it might be as a result of deficiency in some nutrients, this was confirmed when I attended a training on nutrition organized by the AMAL project, the Nutrition Officer taught has the kinds of foods that the children should take and now Mwanthi is doing well, Peninah also advised me to attend Itumbule health centre for more advise,"* Margaret said.

Health care

The group has benefited from access to health care through the CHVs trained by the AMAL project. The CHVs have been attached to health centers where they have helped the group member's access healthcare by acting as a link between the group and health facilities they are attached to. CHVs have conducted sensitization sessions on hygiene which have led to good sanitation practices at the household level. The group members have also benefited from sensitization sessions on the COVID- 19 pandemic being conducted by the CHVs. The sensitization sessions have had significant impact in preventing the COVID 19 pandemic to the group members and the entire community.

In addition to the CHVs, capacity building on health education from the ministry of health officers has also had positive significant impact on the women. Previously there was limited access to health education from these experts but thanks to the AMAL project, the women have had a link with the officers and accessed health education. The health education has involved use of health promotion

approaches and strategies that have supported and led to behavioral change in health spheres at the household level.

Women empowerment

Itumbule M2M group has a VSLA that was established after the group's enrollment in the AMAL project. The members have not been involved in any VSLA group before, the group's VSLA has led to economic empowerment of the group members from the savings scheme the members have been involved in. Currently the group has been able to raise shares/savings of Kshs. 56,500 in the process of starting loaning.

The group treasurer, Dorcus Munyoki said that the group bought 120 seedlings of mangoes trees for their demo farm, *"the group committee bought 100 mangoes at Wote town in the year 2020, the mangoes are doing well and the members were very happy, some of the mangoes were sold and the money was banked in the group's account,"* she said smiling.

The group leaders have been empowered through capacity building and management, structural support to steer the group using sustainable approaches that have fostered group cohesion. This has enabled the group to begin their own initiatives to supplement the support provided by the AMAL project. The group has established a commercial tree nursery which has provided income to the group leading to economic empowerment of the women.

Through their own initiative the group has an acquired one-acre demo farm which they plant cereals especially green grams and it is in this demo farm that the group members learn and implement Good Agricultural Practices (GAPs) which they have adopted in their household farms.

Photos



Multi storey garden – installed Vertical bag at Peninah Munyasya's farm planted with kales and spinach.



Sunken beds at Peninah Munyasya's farm – she has used different kitchen garden technologies in her farm



The group's demo farm planted with vegetables, fruit trees and tree nursery.



The group displaying their produce at KCEP CRAL expo in held in Kathonzweni ward.



Josephine Mutiso, Yoani M2M CHV working on her vegetable garden one of the irrigation demo site for the group

RM and Institutional Development

The following activities were conducted under this thematic area;

1. **Resource Mobilization Strategy Review** - Caritas Kitui has been using its first Resource Mobilization 2017 - 2021 to guide its fundraising activities for the past five years. A team of 5 Caritas staff were trained on Resource Mobilization by one of its partners Trocaire and a consultant was tasked to guide Caritas on review of the existing strategy, the draft document has been presented to the board awaiting approval. The strategy has guided the development of Concept notes and Call for Proposals in various thematic/intervention areas.
2. **Review of Caritas Kitui Strategic Plan** - The current global socio-economic environment and changes in donor interest called for review of Caritas Kitui Strategic Plan (SP) 2018 - 2022. The process was led by a consultant in close consultation with the Caritas Staff. The reviewed Strategic plan 2022 - 2026 has been approved by the board and shared to partners.

- 3. Development of Caritas Risk Management Policy** - Caritas Kitui like any other Non-profit organization is operating in an environment in which funding is limited and diminishing due to rapidly shifting donor landscape or space. Many countries whose governments have in the past traditionally supported the work of civil society organizations to enhance the well-being of marginalized or vulnerable groups of citizens are shifting to supporting growth of trade and investments in their national interest for their economic growth. With this reality, more than ever before, Caritas Kitui is alive to this uncertainty and is positioning itself to remain relevant and withstand the shocks.

To be able to effectively do so the organization is seeking a consultant to lead in analyzing the risks that could cripple the seamless operations of the organization and set the measures to mitigate the uncertainties. The risks will be analyzed and organized into a risk management register with three main parts; Risk identification, Risk assessment and Action plan.

The risk register analyzed among other elements; Financial, Employment, Donor Funding, Projects management, IT, Insurance, vendors and suppliers.

By having the document in place Caritas has achieved by preventing and taking control of the risks that may hinder achievements of its goal and also able to have checks and balances while mitigating the risks.

- 4. Staff Training** - Caritas Partners has continuously capacity built staff on various aspects related to the project being implemented. Some of the trainings includes;
- Resource Mobilization to 5 staff
 - Agro ecology to 14 Staff
 - Social Accountability to 12 staff
 - Conservation Agriculture with Trees (CAWT) and Human Nutrition to 7 staff
 - Organizational Development to 7 staff
 - Energy Delivery Model (EDM) approaches in clean cooking to 6 staff

AMAL Itumbule Mother to Mother group - Success story

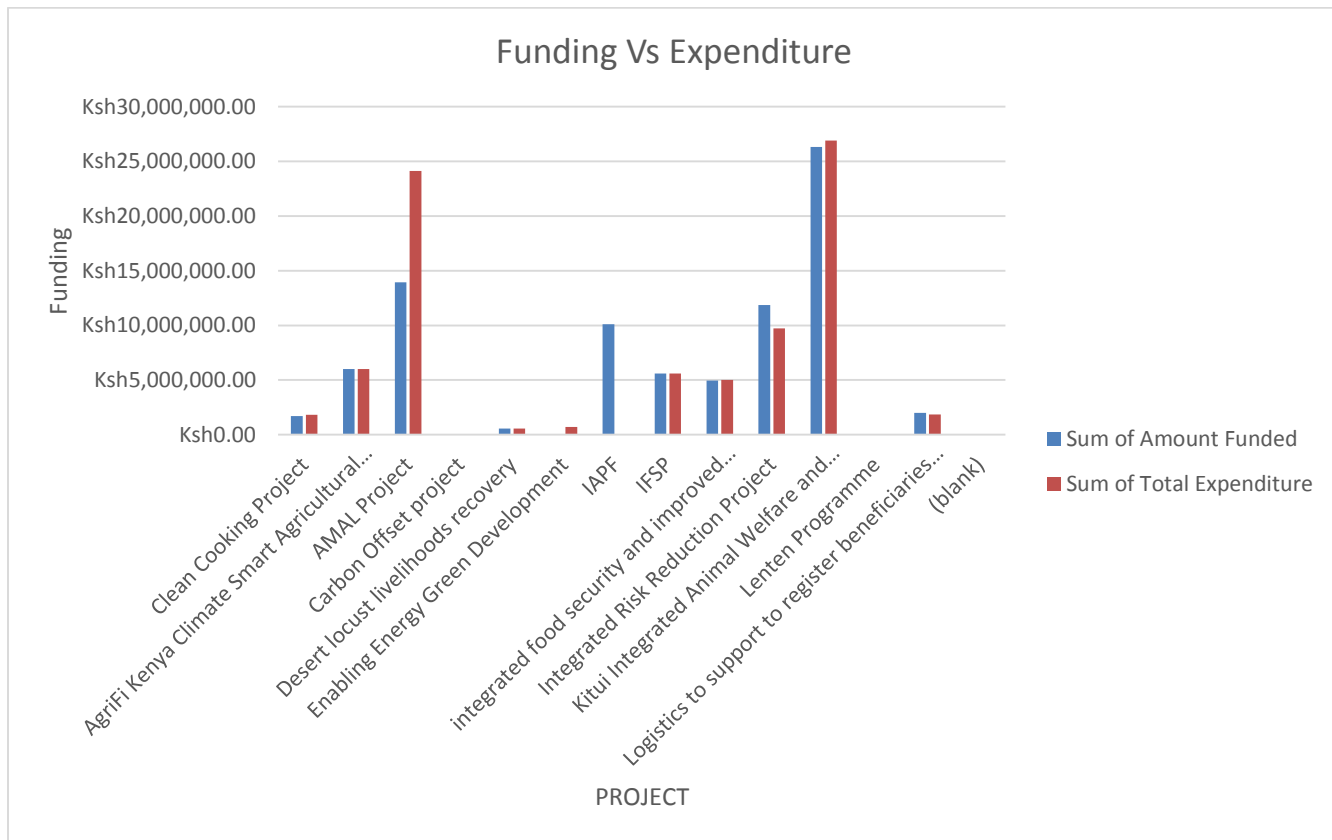
Financial Analysis

S/ No .	Thematic Area	Donor Name	Project Name	Total Amount Funded(For 2021)	Total Expenditure	Variance	Variance explanation
1.	Livelihood	CAFOD	Integrated food security project	5.6m	5.6m	5.6	Balanced Budget.
2	Livelihood	Trocaire	Community resilience building and sustainable natural resource management.	10,108,427	101,084,27	7,077	

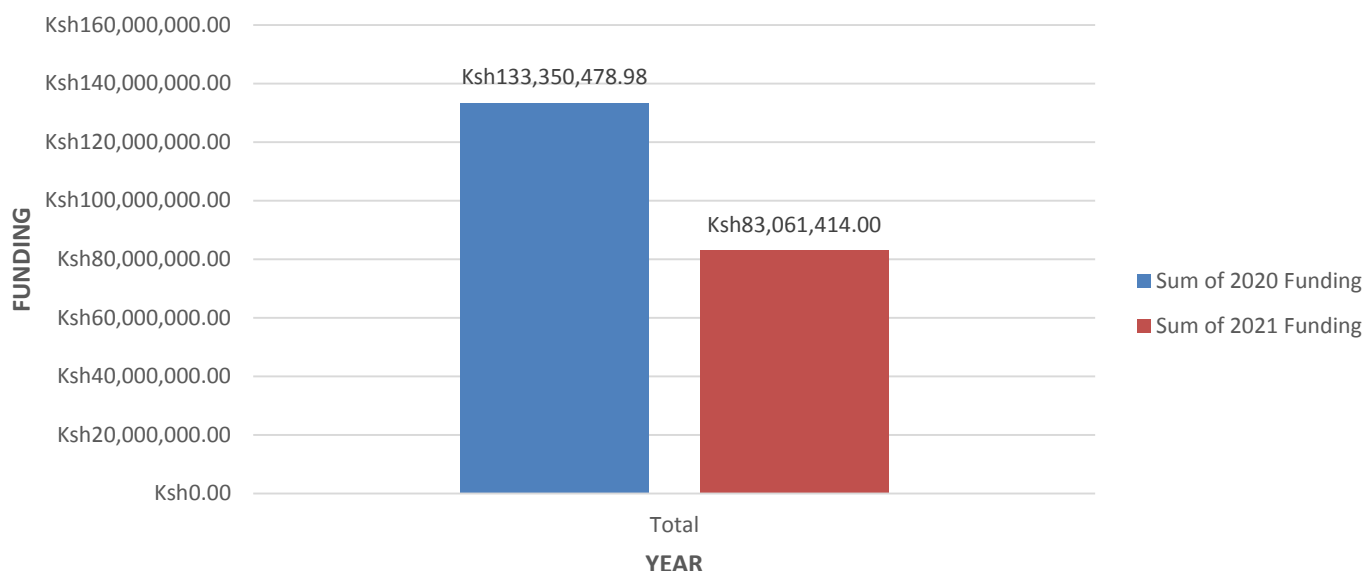
3	Livelihoods	Welthungerhilfe (WHH) BMZ	Strengthening market linkages for improved food and nutrition security of agro pastoralist households in Kitui and Makueni Counties (AMAL Project)	13,930,750	24,136,107	10,205,357	<ul style="list-style-type: none"> There was realignment of the funds from all the balances in year 2019 and 2020 budget lines so as to ensure the funds were spent There was additional funding for Covid 19 response that was not included in the initial 2021 annual budget
	Livelihoods	KALRO and GVT of Kenya	AgriFi Kenya Climate Smart Agricultural Productivity Project	6,000,000	5,999,813	187	Balanced Budget
4	Livelihoods	Brooke E.A.	Kitui Integrated Animal Welfare and Livelihoods Project (KIAWLP)	26,327,288	26,909,918	-582,630	Incorporation of drought response as an emergency accounted for additional expenditure
5	livelihoods	St.Paul and minneapolis	integrated food security and improved water management for livelihoods(IFEWMFLs)	4,960,000	5,009,916	49,916	
6	livelihoods	MISEREOR	Integrated Risk Reduction Project	11,867,800	9,732,950	2,134,850	
6	Humanitarian and emergency response	Food and agriculture organization (FAO)	Logistics to support to register beneficiaries and support trainings of the registered beneficiaries	1,999,840	1,860,081	139,759	Under spend from vehicle mileage
7		Food and agriculture organization (FAO)	Desert locust livelihoods recovery	575,558	576,078.50	160,520.50	Some activities were to be catered from the 2nd trench which had not been send by the time of reporting
8	Environment and Climate Change	Fastenaktion	Carbon Offset project	15.9M	14M	1.9M	Some activities were not carried out in the year; scheduled for next year 2022
9	Governance and Advocacy	IIED	Improving Strategy and Uptake of Clean Cooking Project	1,691,751	1,810,689	118,938	There were some additional activities on carrying out endline surveys that had not

							been budgeted for in the initial budget.
10	Governance and Advocacy	UK PACT	Enabling Energy Green Development	5.7 M	700,000	5	The project had just started in the month of october and was in the first quarter of implementation.
11	Governance and Advocacy	Lenten Contribution	Lenten Programme	1.5M	5,000	1,000,000	The remaining amount will be spend to run activities towards peace 2022 elections

- Bar chart representation on budget comparison 2020and 2021



Comparison between 2020 and 2021 Funding.



S/No.	Project Name	Challenges	Recommendations
Livelihoods	Kitui Integrated Animal Welfare and Livelihoods Project (KIAWLP)	<ol style="list-style-type: none"> Continued limited supply of veterinary essentials- drugs such as pain relievers and antibiotics: This hindered the provision of quality veterinary health to donkeys in emergency need across the county. Very few LSPs (Local Service Providers) with 	<ol style="list-style-type: none"> Caritas Kitui will re-initiate engagement with key stakeholders (pharmaceutical distributors, agrovet owners and SPs) to agree and effect on a subsidy plan as agreed during the last meeting.

		reference to the vastness or area of coverage in Kitui County hence affecting the immediate response to emergency cases. Only one Animal Health Assistant per Ward (37 AHAs) which are very expansive with 3 lacking an LSP.	2. There is a need for the County government to add more AHAs (Animal Health Assistants).
Humanitarian and emergency response	Desert locust livelihoods recovery	<ol style="list-style-type: none"> 1. Poor rains impacted negatively on crop production 2. The 2nd wave of desert locust invasion infected and damaged the crops. 3. Delays on input distribution i.e Maize and beans 4. Delays in disbursement of funds which slowed down the implementation 	<ol style="list-style-type: none"> 1. Proper planning before starting implementation 2. Consultation and collaboration before and during implementation process
	Logistics to support to register beneficiaries and support training for the registered beneficiaries	<ol style="list-style-type: none"> 1. Some beneficiaries had invalid sim cards/blocked lines 2. sim cards numbers which could not correspond with ID numbers 3. 1,000 beneficiaries allocated could not accommodate the number affected by desert locust 4. Late disbursement of cash to beneficiaries 	<ol style="list-style-type: none"> 1. Proper planning before implementation 2. Consultative meetings during implementation process 3. Have project evaluation to access impact
	Integrated food security and improved water management for livelihoods phase	<ol style="list-style-type: none"> 1. COVID -19 pandemic slowed the community participation to project work due poor turn up 2. Freezing of funding also attributed to COVID 19 pandemic outbreak 	<ol style="list-style-type: none"> 1. Community members to re-organise themselves into small groups and work in shifts 2. Community members to plan for the activities which require a lot of water to be done during the rainy season

	III	3. Insufficient water due to poor rains received in the area and the prolonged drought has compromise some of the activities like molding of the interlocking blocks and adoption of the agro ecology approaches	3. Members to start thinking of having storage systems at the project sites
Livelihoods	Strengthening market linkages for improved food and nutrition security of agropastoralist households in Kitui and Makueni Counties (AMAL Project)	<p>1. The project concentrated much at marketing level but had limited support to production hence HHs still struggling with food insecurity.</p> <p>2. Depressed 2020 OND and 2021 MAM rains led to very poor yields. This affected aggregation efforts</p>	There was need for whole and inclusive value chain development (Land Preparation, production, processing, transportation and marketing) value chain support
Governance and Advocacy	Improving Strategy and Uptake of Clean Cooking Project	Low adoption of clean cooking stoves due to the high upfront costs especially for the electric pressure cookers	The project team connected the participants
Governance and Advocacy	Enabling Energy Green Development	-	-
Governance and Advocacy	Lenten Programme	Government restriction on visits to the Prisons made it impossible to made it impossible to hold the scheduled visit the Kitui Prisons	Engagements with inmates will be made once the ban is lifted

s /no.	Project Name	Lessons Learnt	Opportunities
Livelihoods	Kitui Integrated Animal Welfare and Livelihoods Project (KIAWLP)	<p>Upsurge of ectoparasite infestation (ticks) during drought season in areas bordering game reserves which have been identified as breeding zones of ticks in Kitui south and Mwingi North sub counties. This undermines the interventions on ectoparasite control.</p> <p>Use of media remains key in disseminating information relating to DHT. This was evidenced during the annual convention forum where a total of 3.8M people tuned in to listen to the live event.</p>	<p>Caritas Kitui supported local service providers during open field days to enhance ectoparasite control. 21 Animal Welfare Development Mentors were supported with acaricides (ectopor) to help in ectoparasite control. a total of 2,430 working with 4,860 donkeys benefitted.</p> <p>The project will continue using media to popularize its work, create awareness for transformational community behavior change.</p>
	Integrated Risk Reduction Project	<p>Effects of COVID 19 continued to be felt farmers livelihoods – affecting activities such as SILC and household food reserves and income</p> <p>Poor markets for farmers produce</p> <p>Over Reliance on rain fed agriculture resulting to low production during the last 3 consecutive failed rains</p>	
Humanitarian and emergency response	Desert locust emergency response	<p>Planning of activities before start of implementation is key</p> <p>Collaboration and consultative meetings are crucial</p>	<ul style="list-style-type: none"> ● Good working relations acquired through collaboration by all stakeholders
	Logistics to support to register	<ul style="list-style-type: none"> ● Proper mobilization and sensitization on project details and 	<ul style="list-style-type: none"> ● Caritas had a good working relationship with national, county and local administration authorities

	beneficiaries and support training for the registered beneficiaries	<p>community based targeting helps in identifying the correct beneficiaries as the community is well informed about the project and given mandate to identify beneficiaries from their own locality.</p> <ul style="list-style-type: none"> • The approach minimized omission and addition error of correct and incorrect beneficiaries 	<p>in target areas.</p> <ul style="list-style-type: none"> • The relationship and collaboration led to sense of project ownership by the local authority and the beneficiaries
	Integrated food security and improved water management for livelihoods phase III	<ol style="list-style-type: none"> 1. Routine monitoring is critical to ensure implementation processes are achieved following the schedule. 2. Implementation plans are key to ensure activities are on schedule. 3. Assessment and prioritization of community needs is key before the interventions 	
Livelihoods	Strengthening market linkages for improved food and nutrition security of agropastoralist households in Kitui and Makueni Counties (AMAL Project)	<ul style="list-style-type: none"> • Building on local practices and institutions such local chama, VSLAs, FSAs, local traders, ensures promoted methodologies and approaches are well received and adopted by the community 	<ul style="list-style-type: none"> • In the project area, the willingness of the community to embrace community contribution in kind as well as monetary

		<ul style="list-style-type: none"> • Diversification of livelihood technologies that are compatible with community practices such as beekeeping, goat rearing, and poultry are well embraced by communities hence resilience is promoted • Involvement of key stakeholders from the start of project implementation improves on synergies and support, promotes a sense of ownership of the project by the beneficiaries which in the long-term, results to sustainability and continuity of projects best practices 	
Governance and Advocacy	Improving Strategy and Uptake of Clean Cooking Project	Awareness raising on its own is not enough e.g. The Shell Foundation's Room to Breathe social marketing campaign in Southern India shows 83% of respondents said they would buy an "improved" stove, but only 2% actually did. There is need to carry on other activities such as demonstration of the stoves to increase the buy in	There is low level of adoption of Clean Cooking Stoves especially the Electric Pressure Cookers . That creates an opportunity for promotion of the solutions .
Governance and Advocacy	Enabling Energy Green Development	Most farmers are using fuel driven pumps which are dirty sources of energy	Great opportunity to support farmers in transitioning to green energy sources like solar powered irrigation pumps

Caritas Kitui 2021 Partners

- Current logos of Caritas Kitui partners and donors for 2021.



For a world without hunger



